



MAX series

As "Max" as reliable

AC Driving System Offers Strong Dynamics, Accurate Control & Stable Performance;
High Intensity Structure Design & High Quality Spare Parts Enhance Performance Reliability;
Offer Full Range Standard & Customized Options for Material Handling and Warehouse Equipment.

Contents

EPT20-20WA / EPT25-WA Electric Pallet Truck 2.0/2.5t	P01-04
EPT20-20RA/EPT20-RASH EPT25-RAS/EPT30-RAS Electric Pallet Truck 2.0/2.5/3.0t	P05-09
EPT20-30RTS / EPT20-35RTS Electric Pallet Truck 3.0/3.5t	P10-13
EPT20-RASS Electric Pallet Truck 2.0t	P14-17
ES12-12WA/ ES14-14WA/ ES16-16WA Electric Stacker 1.2-1.6t	P18-22
ES20-WA Electric Stacker 2.0t	P23-27
ES08-WAi Mono Mast Electric Stacker With Initial Lift 0.8t	P28-31
ES12-12Wai / EPT20-20Wai Electric Stacker 1.2t / Electric Pallet Truck 2.0t	P32-37
RSB141 Electric Stacker 1.4t	P38-42
ES16-RS Electric Stacker 1.6t	P43-47
ES16-RSi Electric Stacker 1.6t	P48-51
ES20-20RAS Electric Stacker 2.0t	P52-56
ES12-12CS/ ES15-15CS Electric Stacker 1.2/1.5t	P57-61
ES12-25WA Electric Stacker 1.2t	P62-66

ES14-30WA/ ES18-40WA

Electric Stacker 1.4/1.8t ————— P67-71

CQE15S

Electric Stacker 1.5t ————— P72-76

CQE12R/15R

Electric Stacker 1.2/1.5t ————— P77-81

QDD10

Electric Tractor 1.0t ————— P82-84

QDD03

Electric Tractor 0.25t ————— P85-86

EPT20-30TW

Electric Tractor 3.0t ————— P87-90

QDD30S/45S

Electric Tractor 3.0/4.5t ————— P91-94

QDD30TSC

Electric Tractor 3.0t ————— P95-98

QDD60TSC

Electric Tractor 6.0t ————— P99-102

QDD250

Electric Tractor 25t ————— P103-105

EPT20-RAP

Low Order Picker 2.0t ————— P106-109

JX0

Task Support Vehicle ————— P110-112

JX1

Medium Level Order Picker 0.5t ————— P113-115

JX2-1

Order-picking Truck 0.7t ————— P116-118

JX2-3

Order-picking Truck 0.7t ————— P119-121

JX2-4

Order-picking Truck 1.0t ————— P122-124



EPT20-20WA
EPT25-WA
Electric Pallet Truck 2.0/2.5t

Long-tiller Design Makes Operations Easier and More Convenient;
Small Turning Radius Requirements, Excellent Performances in Curved Aisles;
Ideal Choice for Heavy Duty but Short Distance Applications.

EP EQUIPMENT CO.,LTD
www.ep-ep.com



FEATURE



Performance

- The innovative AC system offers strong power, accurate control and excellent performance.
- High strength vertical gearbox provides reliable uptime.
- Low-noise and durable hydraulic unit, high quality cylinder as well as hose ensure the high reliability of hydraulic system.
- AMP connector and durable electric wires greatly reduce malfunctions of components.
- One-time formed fork, box type frame and adjustable linkage extends the life of undercarriage.



Safety

- Curved design of front chassis avoids pinching point when lifting.
- Curved design of bottom frame ensures proper ground clearance and avoids hurting operator's feet.
- Emergency reverse belly button protects the operator from getting hurt.
- Emergency disconnecter will cut off power source to avoid accident when the truck goes out of control.
- Anti-rolling back brake keeps the truck from skidding down when truck is out of control or travelling on ramp.
- LBR option avoids cargo from falling down.
- Long operation tiller withstands most impacts from crashes.

Operation

- With the new design of ergonomical tiller head, all buttons can be reached conveniently & comfortably.
- Thanks to the long tiller design, it decreases the steering force greatly which leads to easy operations.
- With its special fork design, it is suitable for all popular pallets.
- Over 180° handle rotation range tiller & compact size ensure small turning radius & excellent maneuverability.
- Creep speed function: when tiller is in near vertical position, the driving speed will decrease automatically, allowing delicate operation in confined space.
- Creep Switch for vertical handle (optional).

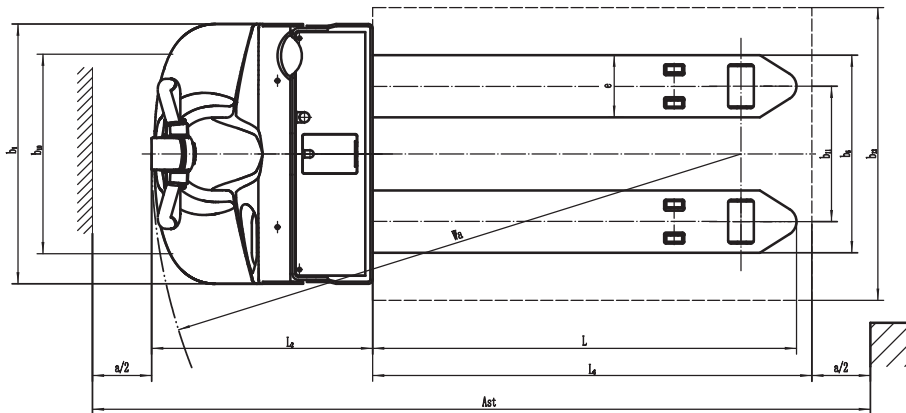
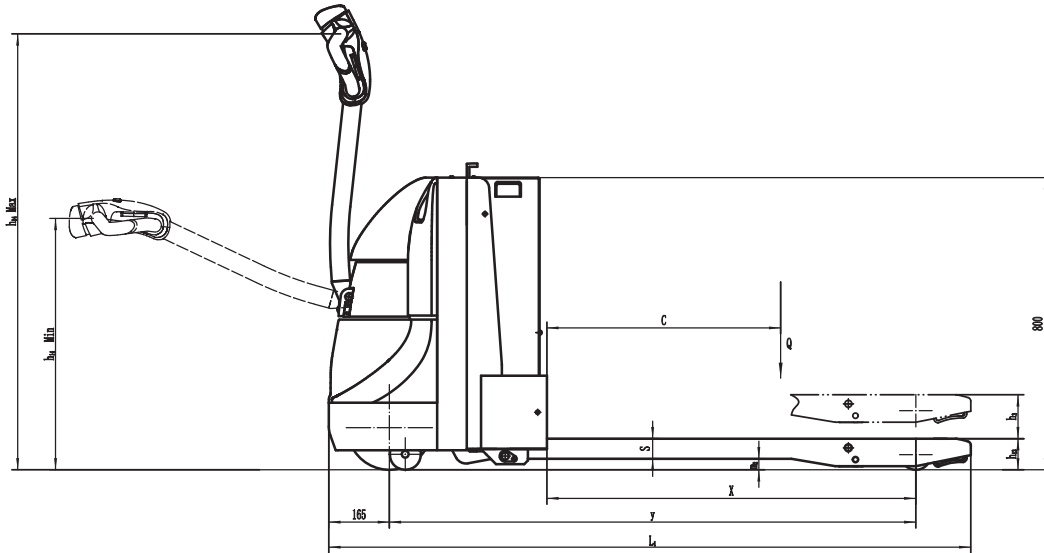
Maintenance

- AC traction motor, maintenance free.
- Hour meter and battery indicator remind the operator of battery charging.
- Easily remove the back cover by only loosening two bolts; Access to all key components for inspection, maintenance and replacement.
- Easy access for battery maintenance.
- Vertical motor makes the inspection & service much more convenient.
- Control system allows easy trouble-shooting.
- Low voltage lift cut off design protects batteries.

Electric Pallet Truck 2.0/2.5t EPT20-20WA/EPT25-WA

Distinguishing mark						
1.1	Manufacturer			EP		EP
1.2	Model designation			EPT20-20WA		EPT25-WA
1.3	Drive unit			Electrics		Electrics
1.4	Operator type			pedestrian		pedestrian
1.5	rated capacity	Q	kg	2000		2500
1.6	Load center distance	c	mm	600		600
1.7	Load distance	x	mm	916/982	937/1003	916/982 937/1003
1.9	Wheelbase	y	mm	1418	1488	1418 1488
Weight						
2.1	Service weight (include battery)		kg	535		565
2.2	Axle loading, laden driving side/loading side		kg	955 / 1580		1070 / 1995
2.3	Axle loading, unladen driving side/loading side		kg	430 / 105		445 / 120
Types, Chassis						
3.1	Tyre type driving wheels/loading wheels			polyurethane/ polyurethane		polyurethane/ polyurethane
3.2	Tyre size, driving wheels (diameterxwidth)		mm	Φ230x75		Φ230x75
3.3	Tyre size, loading wheels (diameterxwidth)		mm	Φ85x70 / Φ83x115		Φ85x70 / Φ83x115
3.4	Tyre size, caster wheels (diameterxwidth)		mm	Φ85x48		Φ85x48
3.5	Wheels, number driving, caster/loading (x=drive wheels)		mm	1 x + 2 / 4 / 1 x + 2 / 2		1 x + 2 / 4 / 1 x + 2 / 2
3.6	Track width, front, driving side	b ₁₀	mm	498		498
3.7	Track width, rear, loading side	b ₁₁	mm	370 / 430 / 515		370 / 430 / 515
Dimensions						
4.4	Lift height	h ₃	mm	120		120
4.9	Height drawbar in driving position min./max.	h ₁₄	mm	715 / 1200		715 / 1200
4.15	Lowered height	h ₁₃	mm	85		85
4.19	Overall length	l ₁	mm	1748	1818	1748 1818
4.20	Length to face of forks	l ₂	mm	621		598
4.21	Overall width	b ₁ / b ₂	mm	710		710
4.22	Fork dimensions	s/ e/ l	mm	55x170x1150 55x170x1220		55x170x1150 55x170x1220
4.25	Outside width of the forks	b ₅	mm	540 / 600 / 685		540 / 600 / 685
4.32	Ground clearance, center of wheelbase	m ₂	mm	30		30
4.34.1	Aisle width for pallets 1000 x 1200 crossways	Ast	mm	2419		1815
4.34.2	Aisle width for pallets 800 x 1200 lengthways	Ast	mm	2667		2015
4.35	Turning radius	Wa	mm	1619		1595
Performance data						
5.1	Travel speed, laden/ unladen	km/ h	km/h	5 / 5.5		5 / 5.5
5.2	Lifting speed, laden/ unladen		m/ s	0.051 / 0.060		0.051 / 0.060
5.3	Lowering speed, laden/ unladen		m/ s	0.032 / 0.039		0.032 / 0.039
5.8	Max. gradeability, laden/unladen			8 / 16		6 / 16
5.10	Service brake type			Electromagnetic		Electromagnetic
Electric-engine						
6.1	Drive motor rating S2 60 min		kW	1.1		1.1
6.2	Lift motor rating at S3 15%		kW	0.84		0.84
6.3	The maximum allowed size battery		mm	680 x 205 x 600		680 x 205 x 600
6.4	Battery voltage/nominal capacity K5		V/ Ah	24 / 210		24 / 240
6.5	Battery weight		kg	190		220
Addition data						
8.1	Type of drive control			AC		AC
10.5	Steering type			Mechanical		Mechanical
10.7	Sound pressure level at the driver's ear		dB(A)	74		74

If there are improvements of technical parameters or configurations, no further notice will be given.
The diagram shown may contain non-standard configurations.



Option

Options	EPT20-20WA	EPT25-WA
Fork length	○ 1150/1220	○ 1150/1220
Fork width	○540/600/685mm	○540/600/685mm
Double load wheel	●	●
Single load wheel	●	●
Driving wheel	●PU	●PU
Balance wheel	●	●
cold storage	○	○
Battery indicator with hour meter	●	●
Battery indicator without hour meter	○	○
Battery capacity	○210AH/240AH	○165AH/210AH/240AH
Lateral change battery	○	○
Water auto-filling system	○	○
Vertical handler working	○	○
half speed function in turning	○	○
Guard arm	—	—
Fork lowered height	●85mm	●85mm
Special backrest	○1220mm (48in)/1520mm (60in)	○1220mm (48in)/1520mm (60in)

Note: ● standard ○ option — NA



EPT20-20RA

EPT20-RASH

EPT25-RAS

EPT30-RAS

Electric Pallet Truck 2.0/2.5/3.0t

Ideal Option for Heavy Duty Long Distance Material Handling Tasks:
Driving Wheel Pressure Auto-compensation Patent Design Makes Operation Comfortable & Smooth;
Dual-Monitoring Electric Steering Offers Safer and Simpler Operations;
Driving Speed up to 12KM/H Greatly Improves the Efficiency of Long-distance Job.

EP EQUIPMENT CO.,LTD
www.ep-ep.com



FEATURE

Performance

- The innovative AC system offers strong power, accurate control and excellent performance.
- High strength vertical gearbox provides reliable uptime.
- Low-noise and durable hydraulic unit, high quality cylinder as well as hose ensure the high reliability of hydraulic system.
- AMP connector and durable electric wires greatly reduce malfunctions of components.
- One-time formed fork, box type frame and adjustable linkage extends the life of undercarriage.
- Innovative Drive floating operation system(DFA) ensures the stability of the truck when steering at high speed.



Safety

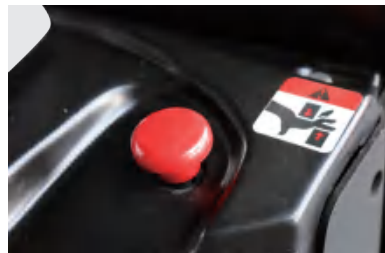
- Two travel speed improves operator safety, with half speed when protection arm off and full speed when protection arm on.
- Emergency reverse belly button protects the operator from getting hurt.
- Emergency disconnecter will cut off power source to avoid accident when truck goes out of control.
- Anti-rolling back brake keeps the truck from skidding down when truck is out of control or travelling on ramp.
- Dual-monitoring power steering, the top safety design (electric steering).

Operation

- With the new design of ergonomical tiller head, all buttons can be reached conveniently & comfortably.
- Foldable platform reduces vibration which make operator comfortable when driving.
- Unique suspension driving floating system(DFA) design, make the operation easy and comfortable.
- When platform is folded, truck can work at low speed in smaller space.
- Ergonomical armrest guarantees easy operation & good resistance.
- Electric power steering, smooth & comfortable (EPS).

Maintenance

- AC traction motor, maintenance free.
- Hour meter and battery indicator remind the operator of battery charging.
- Easily remove the back cover by only losing four bolts; Access to all key components for inspection, maintenance and replacement.
- Easy access for battery maintenance.
- Vertical motor makes the inspection & service much more convenient.
- Control system allows easy trouble-shooting.
- Low voltage lift cut off design protects batteries.



Electric Pallet Truck 2.0t

EPT20-20RA/EPT20-RASH

Distinguishing mark						
1.1	Manufacturer			EP		EP
1.2	Model designation			EPT20-20RA		EPT20-RASH
1.3	Drive unit			Electrics		Electrics
1.4	Operator type			standing		standing
1.5	rated capacity	Q	kg	2000		2000
1.6	Load center distance	c	mm	600		600
1.8	Load distance	x	mm	916 / 982	937 / 1003	916 / 982 / 937 / 1003
1.9	Wheelbase	y	mm	1418	1438	1418 / 1438
Weight						
2.1	Service weight (include battery)		kg	670		690
2.2	Axle loading, laden driving side/loading side		kg	1066 / 1604		1076 / 1614
2.3	Axle loading, unladen driving side/loading side		kg	546 / 124		556 / 134
Types,Chassis						
3.1	Tyre type driving wheels/loading wheels			Polyurethane / Polyurethane		Polyurethane / Polyurethane
3.2	Tyre size, driving wheels (diameterxwidth)		mm	Φ230x75		Φ230x75
3.3	Tyre size, loading wheels (diameterxwidth)		mm	Φ85x70 / Φ83x115		Φ85x70 / Φ83x115
3.4	Tyre size, caster wheels (diameterxwidth)		mm	Φ130x60		Φ130x60
3.5	Wheels, number driving, caster/loading (x=drive wheels)		mm	1 x +2 / 4 / 1 x + 2 / 2		1 x +2 / 4 / 1 x + 2 / 2
3.6	Track width, front,driving side	b ₁₀	mm	510		510
3.7	Track width,rear,loading side	b ₁₁	mm	370 / 430 / 515		370 / 430 / 515
Dimensions						
4.4	Lift height	h ₃	mm	125		125
4.9	Height drawbar in driving position min./max.	h ₁₄	mm	1150 / 1470		1150 / 1470
4.15	Lowered height	h ₁₃	mm	85		85
4.19	Overall length	l ₁	mm	1860	1930	1860 / 1930
4.20	Length to face of forks	l ₂	mm	710		710
4.21	Overall width	b ₁ / b ₂	mm	730		730
4.22	Fork dimensions	s/ e/ l	mm	55x170x1150 / 55x170x1220		55x170x1150 / 55x170x1220
4.25	Outside width of the forks	b ₅	mm	540 / 600 / 685		540 / 600 / 685
4.32	Ground clearance, center of wheelbase	m ₂	mm	30		30
4.34.1	Aisle width for pallets 1000 x 1200 crossways	Ast	mm	2522		2522
4.34.2	Aisle width for pallets 800 x 1200 lengthways	Ast	mm	2370		2370
4.35	Turning radius	Wa	mm	1700		1700
Performance data						
5.1	Travel speed, laden/ unladen	km/ h	km/h	5.5 / 6		9.0 / 12.0
5.2	Lifting speed, laden/ unladen		m/ s	0.023 / 0.031		0.023 / 0.031
5.3	Lowering speed, laden/ unladen		m/ s	0.043 / 0.032		0.043 / 0.032
5.8	Max. gradeability, laden/unladen		%	8 / 16		8 / 16
5.10	Service brake type			Electromagnetic		Electromagnetic
Electric-engine						
6.1	Drive motor rating S2 60 min		kW	1.5		2.5
6.2	Lift motor rating at S3 15%		kW	1		1
6.3	The maximum allowed size battery		mm	660 x 205 x 660		660 x 205 x 660
6.4	Battery voltage/nominal capacity K5		V/ Ah	24 / 210		24 / 210
6.5	Battery weight		kg	190		190
Addition data						
8.1	Type of drive control			AC		AC
10.5	Steering type			Mechanical/Electronic		Electronic
10.7	Sound pressure level at the driver's ear		dB (A)	74		74

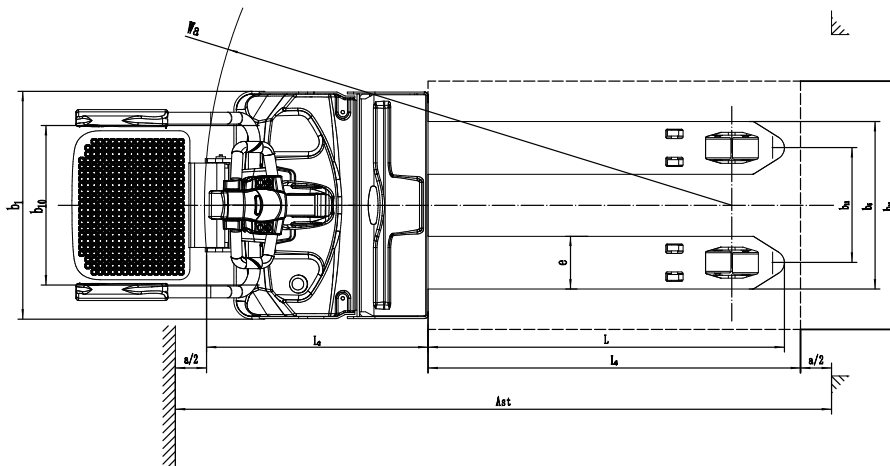
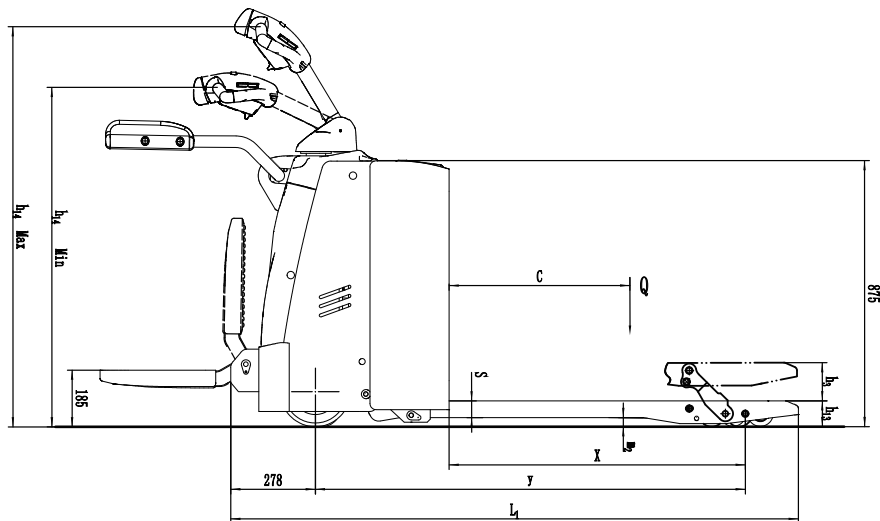
If there are improvements of technical parameters or configurations, no further notice will be given.
The diagram shown may contain non-standard configurations.

Electric Pallet Truck 2.5t/3.0t

EPT25-RAS/EPT30-RAS

Distinguishing mark							
1.1	Manufacturer			EP		EP	
1.2	Model designation			EPT25-RAS		EPT30-RAS	
1.3	Drive unit			Electrics		Electrics	
1.4	Operator type			standing		standing	
1.5	rated capacity	Q	kg	2500		3000	
1.6	Load center distance	c	mm	600		600	
1.8	Load distance	x	mm	916 / 982	937 / 1003	916 / 982	937 / 1003
1.9	Wheelbase	y	mm	1418	1438	1418	1438
Weight							
2.1	Service weight (include battery)		kg	690		700	
2.2	Axle loading, laden driving side/loading side		kg	1176 / 2014		1356 / 2334	
2.3	Axle loading, unladen driving side/loading side		kg	556 / 134		556 / 134	
Types, Chassis							
3.1	Tyre type driving wheels/loading wheels			Polyurethane / Polyurethane		Polyurethane / Polyurethane	
3.2	Tyre size, driving wheels (diameter×width)		mm	Φ230x75		Φ230x75	
3.3	Tyre size, loading wheels (diameter×width)		mm	Φ85x70 / Φ83x115		Φ85x70 / Φ83x115	
3.4	Tyre size, caster wheels (diameter×width)		mm	Φ130x60		Φ130x60	
3.5	Wheels, number driving, caster/loading (x=drive wheels)		mm	1 x +2 / 4 / 1 x + 2 / 2		1 x +2 / 4 / 1 x + 2 / 2	
3.6	Track width, front, driving side	b ₁₀	mm	510		510	
3.7	Track width, rear, loading side	b ₁₁	mm	370 / 430 / 515		370 / 430 / 515	
Dimensions							
4.4	Lift height	h ₃	mm	125		125	
4.9	Height drawbar in driving position min./max.	h ₁₄	mm	1150 / 1470		1150 / 1470	
4.15	Lowered height	h ₁₃	mm	85		85	
4.19	Overall length	l ₁	mm	1860	1930	1860	1930
4.20	Length to face of forks	l ₂	mm	710		710	
4.21	Overall width	b ₁ / b ₂	mm	730		730	
4.22	Fork dimensions	s / e / l	mm	55x170x1150	55x170x1220	55x170x1150	55x170x1220
4.25	Outside width of the forks	b ₅	mm	540 / 600 / 685		540 / 600 / 685	
4.32	Ground clearance, center of wheelbase	m ₂	mm	30		30	
4.34.1	Aisle width for pallets 1000 × 1200 crossways	A _{st}	mm	2522		2522	
4.34.2	Aisle width for pallets 800 × 1200 lengthways	A _{st}	mm	2370		2370	
4.35	Turning radius	W _a	mm	1700		1700	
Performance data							
5.1	Travel speed, laden/ unladen	km/ h	km/h	5.5 / 6		5.5 / 6	
5.2	Lifting speed, laden/ unladen		m/ s	0.023 / 0.031		0.021 / 0.031	
5.3	Lowering speed, laden/ unladen		m/ s	0.043 / 0.032		0.048 / 0.032	
5.8	Max. gradeability, laden/unladen		%	6 / 16		5 / 16	
5.10	Service brake type			Electromagnetic		Electromagnetic	
Electric engine							
6.1	Drive motor rating S2 60 min		kW	1.5		2.5	
6.2	Lift motor rating at S3 15%		kW	1		1	
6.3	The maximum allowed size battery		mm	660 x 205 x 660		660 x 205 x 660	
6.4	Battery voltage/nominal capacity K5		V/ Ah	24 / 210		24 / 240	
6.5	Battery weight		kg	190		200	
Addition data							
8.1	Type of drive control			AC		AC	
10.5	Steering type			Mechanical/Electronic		Electronic	
10.7	Sound pressure level at the driver's ear		dB (A)	74		74	

If there are improvements of technical parameters or configurations, no further notice will be given.
The diagram shown may contain non-standard configurations.



Option

Options	EPT20-20RA	EPT20-RASH	EPT25-RAS	EPT30-RAS
Fork length	○ 1150/1220mm	○ 1150/1220mm	○ 1150/1220mm	○ 1150/1220
Fork width	○ 685/540mm	○ 685/540mm	○ 685/540mm	○ 685/540mm
Double load wheel	●	●	●	●
Single load wheel	●	●	●	●
Fork lowered height	—	—	—	—
Driving wheel	●PU ○Rubber	●PU —	●PU ○Rubber	●PU ○Rubber
Balance wheel	●	●	●	●
Battery capacity	○210AH/240AH	○210AH/240AH	○210AH/240AH	○210AH/240AH
Lateral change battery	○210AH/240AH	○210AH/240AH	○210AH/240AH	○210AH/240AH
Cold storage	○	○	○	○
Battery indicator without hour meter	○	○	○	○
Battery indicator with hour meter	●	●	●	●
Water auto-filling system	○	○	○	○
Vertical handler working	○	○	○	—
Half speed function in turning	—	●	—	●
Guard arm	●	●	●	●
Special backrest	○1220mm (48in)/1520mm (60in)	○1220mm (48in)/1520mm (60in)	○1220mm (48in)/1520mm (60in)	○1220mm (48in) /1520mm (60in)

Note: ● standard ○ option — NA



EPT20-30RTS EPT20-35RTS Electric Pallet Truck 3.0/3.5t

Pallet Truck with Higher Speed and Greater Capacity;
Provides an ideal choice for Super-tough Working Conditions;
Maximum Capacity Reaches 3.5T and Driving Speed up to 12KM/H;
Dual Pallet Forks Option Doubles Material Handling Efficiency.

EP EQUIPMENT CO.,LTD
www.ep-ep.com



FEATURE



Performance

- The innovative AC system offers strong power, accurate control, excellent performance.
- High strength vertical gearbox, longer working life.
- Low-noise but durable hydraulic unit, good quality cylinder as well as hose ensure the high reliability of hydraulic system.
- AMP connector and durable electric wires greatly reduce malfunctions of components.
- Super high intensity frame design supports high speed, high capacity and long distance applications.
- Adjustable long push rod ensures the stability and lifespan of the truck.

Safety

- Moving parts are far from operator to avoid accidents.
- Operator can freely switch between high speed/low speed switch, by which safety and reliability are greatly enhanced.
- Dual protection arm can assure the operator to be protected in any standing position.
- Emergency reverse belly button protects operator from getting hurt.
- Emergency disconnecter will cut off power source to avoid accident when truck goes out of control.
- Large pedal allows operator to stand fully inside and well-protected.
- Anti-rolling back brake keeps the truck from skidding down when truck is out of control or travelling on ramp.
- Dual-monitoring power steering, the top safety design (electric steering).

Operation

- With the new design of ergonomical tiller head, all buttons can be reached conveniently & comfortably.
- Thanks to the entry roller design, this truck enters and exits pallets easily.
- With the design of ergonomical tiller and buttons, the truck can be operated safely and comfortably under various applications with excellent working view.
- High speed wheel are chosen as standard configuration.
- Can be functional as low level order picker with coast control option.
- Side & top open battery compartment allows various battery option, convenient for replacement and maintenance.
- Electric power steering, smooth & comfortable (EPS).

Maintenance

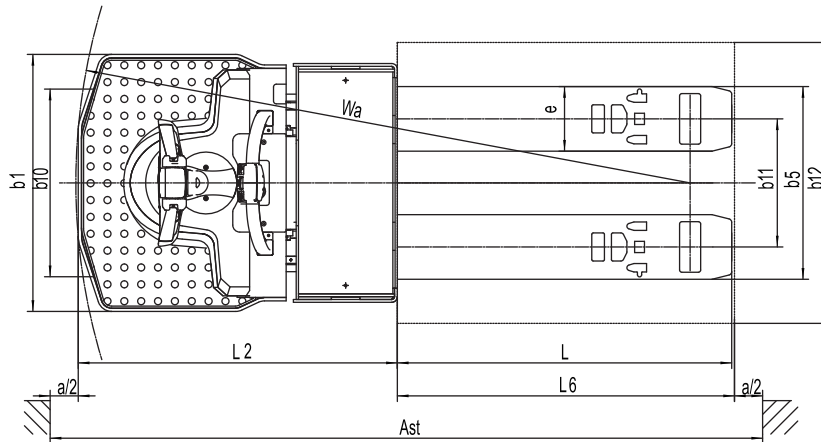
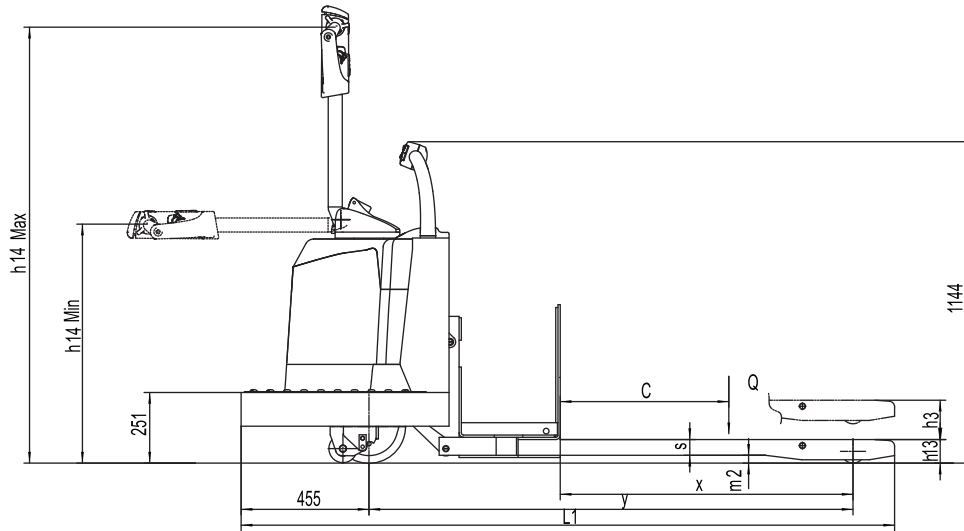
- AC traction motor, maintenance free.
- Hour meter and battery indicator remind operator of battery charging.
- Easily remove the back cover by only loosening four bolts; Access to all key components for inspection, maintenance and replacement.
- Vertical motor makes the inspection & service much more convenient.
- Control system allows easy trouble-shooting.
- Low voltage lift cut off design protects the battery.



Electric Pallet Truck 3.0/3.5t EPT20-30RTS/EPT20-35RTS

Distinguishing mark					
1.1	Manufacturer			EP	EP
1.2	Model designation			EPT20-30RTS	EPT20-35RTS
1.3	Drive unit			Electrics	Electrics
1.4	Operator type			standing	standing
1.5	rated capacity	Q	kg	3000	3500
1.6	Load center distance	c	mm	600	600
1.8	Load distance	x	mm	1042	1042
1.9	Wheelbase	y	mm	1722	1722
Weight					
2.1	Service weight (include battery)		kg	850	920
2.2	Axle loading, laden driving side/loading side		kg	1110/2740	1260/3160
2.3	Axle loading, unladen driving side/loading side		kg	630/220	690/230
Types,Chassis					
3.1	Tyre type driving wheels/loading wheels			polyurethane/ polyurethane	polyurethane/ polyurethane
3.2	Tyre size, driving wheels (diameterxwidth)		mm	Φ254x95	Φ254x95
3.3	Tyre size, loading wheels (diameterxwidth)		mm	Φ82.5x165	Φ82.5x165
3.4	Tyre size, caster wheels (diameterxwidth)		mm	Φ100x63.5	Φ100x63.5
3.5	Wheels, number driving, caster/loading (x=drive wheels)		mm	1x+2/ 2	1x+ 2/ 2
3.6	Track width, front,driving side	b ₁₀	mm	668	668
3.7	Track width,rear,loading side	b ₁₁	mm	456	456
Dimensions					
4.4	Lift height	h ₃	mm	140	140
4.9	Height drawbar in driving position min./max.	h ₁₄	mm	970/1602	970/1602
4.15	Lowered height	h ₁₃	mm	82.5	82.5
4.19	Overall length	l ₁	mm	2325	2325
4.20	Length to face of forks	l ₂	mm	1140	1140
4.21	Overall width	b ₁ / b ₂	mm	915	915
4.22	Fork dimensions	s/ e/ l	mm	56/230/1190	56/230/1190
4.25	Outside width of the forks	b ₅	mm	686	686
4.32	Ground clearance, center of wheelbase	m ₂	mm	26.5	26.5
4.34.1	Aisle width for pallets 1000 × 1200 crossways	Ast	mm	2984	2984
4.34.2	Aisle width for pallets 800 × 1200 lengthways	Ast	mm	2812	2812
4.35	Turning radius	Wa	mm	2190	2190
Performance data					
5.1	Travel speed, laden/ unladen	km/ h	km/h	10.5/12	10.5/12
5.2	Lifting speed, laden/ unladen		m/ s	0.03/0.033	0.028/0.033
5.3	Lowering speed, laden/ unladen		m/ s	0.040/0.038	0.040/0.038
5.8	Max. gradeability, laden/unladen		%	8/16	6/16
5.10	Service brake type			Electromagnetic	Electromagnetic
Electric-engine					
6.1	Drive motor rating S2 60 min		kW	4	4
6.2	Lift motor rating at S3 15%		kW	2.2	2.2
6.3	The maximum allowed size battery		mm	812x330xopen	812x330xopen
6.4	Battery voltage/nominal capacity K5		V/Ah	24/280	24/360
6.5	Battery weight		kg	250	320
Addition data					
8.1	Type of drive control			AC	AC
10.5	Steering type			Mechanical/ Electronic	Mechanical/ Electronic
10.7	Sound pressure level at the driver's ear		dB(A)	74	74

If there are improvements of technical parameters or configurations, no further notice will be given.
The diagram shown may contain non-standard configurations.



Option

Options	EPT20-30RTS/EPT20-35RTS
Fork length	○ 1190/2428
Fork width	○
Double load wheel	—
Single load wheel	●
Driving wheel	● PU
Balance wheel	○
cold storage	○
Battery indicator with hour meter	○
Battery indicator without hour meter	○
Battery capacity	● 360AH
Lateral change battery	○
Water auto-filling system	○
Vertical handler working	○
half speed function in turning	—
Guard arm	—
Fork lowered height	● 82.5mm
Special backrest	○ 1220mm (48in)/1520mm (60in)
Note: ● standard ○ option — NA	



EPT20-RASS Electric Pallet Truck 2.0t

Fits the Dual Monitoring of Traveling and Steering Motors International Safety Standard;
Ergonomic Design Offers Perfect Combination of Performance & Safety;
Best Choice for High Efficiency & Heavy Duty Handling Task,
Top Driving Speed (Optional) Reaches 12KM/H.

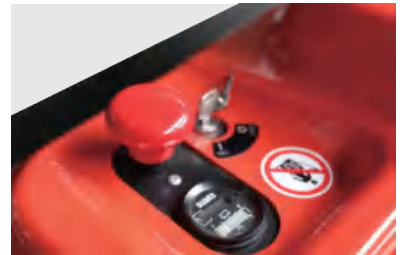
EP EQUIPMENT CO.,LTD
www.ep-ep.com



FEATURE

Performance

- The innovative AC system offers strong power, accurate control, excellent performance.
- High strength vertical gearbox, longer working life.
- Low-noise but durable hydraulic unit, good quality cylinder as well as hose ensure the high reliability of hydraulic system.
- AMP connector and durable electric wires greatly reduce malfunctions of components.
- One-time formed fork, box type frame and adjustable linkage extends the life of undercarriage.
- High Speed(Up to 12KM/H Unladen): High Efficiency of Material Handling Operations



Safety

- Half-surrounded operator compartment design.
- Side leaning position provides wider view when travel forward and backward.
- Safety foot switch avoids operators from misoperating.
- Automatic braking and reverse current braking when foot switch is off or travel switch is neutral.
- Emergency disconnecter will cut off power source to avoid accident when truck goes out of control.
- Anti-rolling back brake keeps the truck from skidding down when truck is out of control or travelling on ramp.
- Dual-monitoring power steering, the top safety design(electric steering).

Operation

- With the new design of ergonomical tiller head, all buttons are controlled conveniently & comfortably.
- With backrest cushion, support seat, spacious operation room and vibration absorber pedal, operator will feel more comfortable.
- The unique suspension driving floating system(DFA) design, ensures the stability in high speed.
- Side-open battery compartment design for easy replacement and maintenance.
- Electric power steering, smooth & comfortable (EPS).

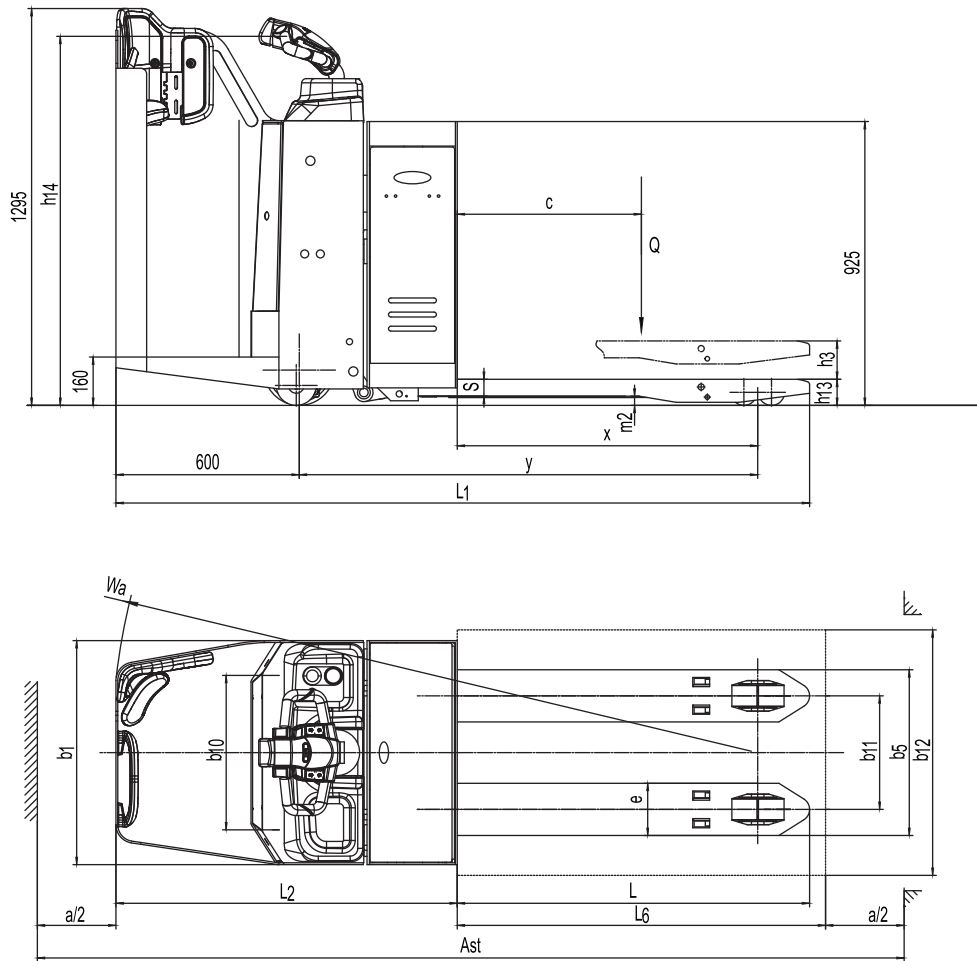
Maintenance

- AC traction motor, maintenance free.
- Hour meter and battery indicator remind the operator of battery charging.
- Easily remove the back cover by only losing four bolts; Access to all key components for inspection, maintenance and replacement.
- Vertical motor makes the inspection & service much more convenient.
- Control system allows easy trouble-shooting.
- Low voltage lift cut off design protects the battery.

Electric Pallet Truck 2.0t EPT20-RASS

Distinguishing mark				
1.1	Manufacturer			EP
1.2	Model designation			EPT20-RASS
1.3	Drive unit			Electrics
1.4	Operator type			standing
1.5	rated capacity	Q	kg	2000
1.6	Load center distance	c	mm	600
1.8	Load distance	x	mm	958
1.9	Wheelbase	y	mm	1465
Weight				
2.1	Service weight (include battery)		kg	810
2.2	Axle loading, laden driving side/loading side		kg	1166 / 1644
2.3	Axle loading, unladen driving side/loading side		kg	630 / 180
Types,Chassis				
3.1	Tyre type driving wheels/loading wheels			polyurethane / polyurethane
3.2	Tyre size, driving wheels (diameterxwidth)		mm	Φ230x75
3.3	Tyre size, loading wheels (diameterxwidth)		mm	Φ85x70
3.4	Tyre size, caster wheels (diameterxwidth)		mm	Φ130x60
3.5	Wheels, number driving, caster/loading (x=drive wheels)		mm	1 x +2 / 4
3.6	Track width, front,driving side	b ₁₀	mm	510
3.7	Track width,rear,loading side	b ₁₁	mm	370 / 430 / 515
Dimensions				
4.4	Lift height	h ₃	mm	125
4.9	Height drawbar in driving position min./max.	h ₁₄	mm	1200
4.15	Lowered height	h ₁₃	mm	85
4.19	Overall length	l ₁	mm	2255
4.20	Length to face of forks	l ₂	mm	1105
4.21	Overall width	b ₁ / b ₂	mm	730
4.22	Fork dimensions	s/ e/ l	mm	55 x 170 x 1150
4.25	Outside width of the forks	b ₅	mm	540 / 600 / 685
4.32	Ground clearance, center of wheelbase	m ₂	mm	30
4.34.1	Aisle width for pallets 1000 x 1200 crossways	Ast	mm	2902
4.34.2	Aisle width for pallets 800 x 1200 lengthways	Ast	mm	2750
4.35	Turning radius	Wa	mm	2102
Performance data				
5.1	Travel speed, laden/ unladen	km/ h	km/h	9.0 / 12.0
5.2	Lifting speed, laden/ unladen		m/ s	0.051 / 0.060
5.3	Lowering speed, laden/ unladen		m/ s	0.032 / 0.039
5.8	Max. gradeability, laden/unladen		%	8 / 16
5.10	Service brake type			Electromagnetic
Electric-engine				
6.1	Drive motor rating S2 60 min		kW	2.5
6.2	Lift motor rating at S3 15%		kW	1
6.3	The maximum allowed size battery		mm	652 x 270 x 680
6.4	Battery voltage/nominal capacity K5		V/Ah	24 / 280
6.5	Battery weight		kg	250
Addition data				
8.1	Type of drive control			AC
10.5	Steering type			Electronic
10.7	Sound pressure level at the driver's ear		dB(A)	74

If there are improvements of technical parameters or configurations, no further notice will be given.
The diagram shown may contain non-standard configurations.



Option

Options	EPT20-RASS
Fork length	○ 1150/1220
Fork width	○ 685/600/540mm
Double load wheel	●
Single load wheel	●
Fork lowered height	—
Driving wheel	●PU
Balance wheel	—
Battery capacity	●
Lateral change battery	○360AH
cold storage	○360AH
Battery indicator without hour meter	○
Battery indicator with hour meter	●
Water auto-filling system	○
Vertical handler working	—
half speed function in turning	●
Guard arm	—
Special backrest	○1220mm (48in)/1520mm (60in)
Note: ●standard ○option —NA	



ES12-12WA/ES14-14WA ES16-16WA Electric Stacker 1.2-1.6t

Ideal Choice for Heavy Duty Short Distance Handling and Stacking Tasks:
Long-tiller Design Makes Operations Easy and Convenient;
Long aside tiller offers wider view and safer operation.

EP EQUIPMENT CO.,LTD
www.ep-ep.com



FEATURE

Performance

- The innovative AC system offers strong power, accurate control, excellent performance.
- High strength vertical gearbox, longer working life.
- Low-noise but durable hydraulic unit, good quality cylinder as well as hose ensure the high reliability of hydraulic system.
- AMP connector and durable electric wires greatly reduce malfunctions of components.
- H shape mast channel mast improves the strength of the whole truck.



Safety

- Safe hydraulic system design prevents mast from falling down abruptly when hydraulic pipeline cuts off.
- Emergency reverse belly button protects the operator from getting hurt.
- Emergency disconnecter will cut off power source to avoid accident when truck goes out of control.
- Multiple lifting limit protection ensures safety.
- Automatic switch to lower speed when the fork reaches its setting height.
- Anti-rolling back brake keeps the truck from skidding down when truck is out of control or travelling on ramp.
- Long aside tiller reduces operator's hazards.

Operation

- With the new design of ergonomical tiller head, all buttons can be reached conveniently & comfortably.
- Creep speed function: when tiller is in near vertical position, the driving speed will decrease automatically, allowing delicate operation in confined space.
- Long tiller offers easier operation.
- Aside Operation, Greater View.

Maintenance

- AC traction motor, maintenance free.
- Hour meter and battery indicator remind the operator of battery charging.
- Back cover can be removed easily ; Access to all key components for inspection, maintenance and replacement.
- Easy access for battery maintenance.
- Vertical motor makes the inspection & service much more convenient.
- Control system allows easy trouble-shooting.
- Mast and chassis are assembled together, easy for maintenance.
- Low voltage cut off setting protects batteries.

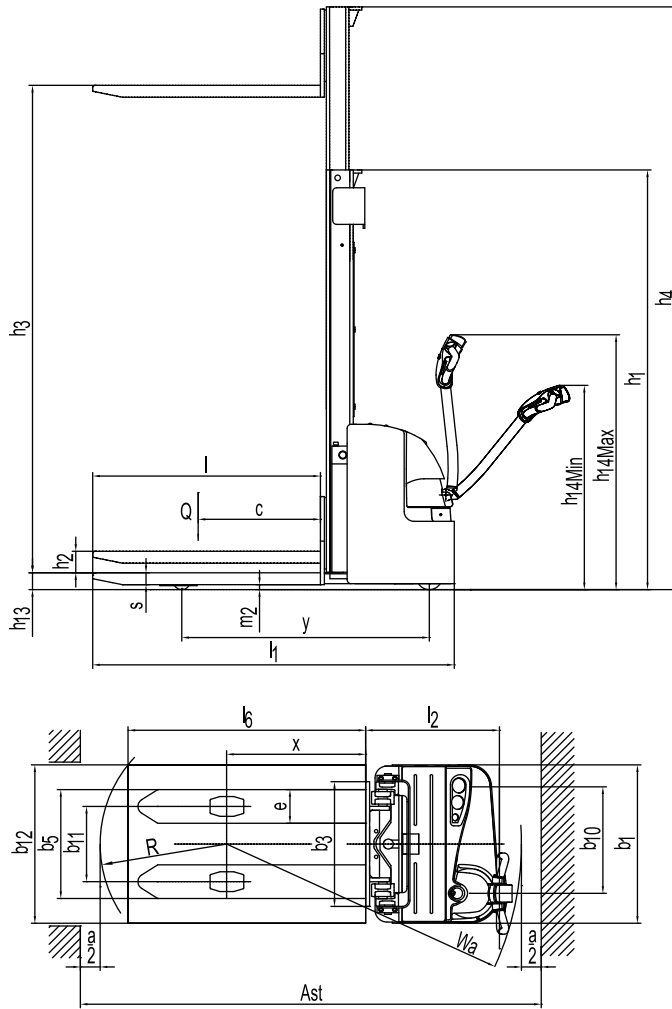
Electric Stacker 1.2-1.6t

ES12-12WA/ES14-14WA

ES16-16WA

Distinguishing mark						
1.1	Manufacturer			EP	EP	EP
1.2	Model designation			ES12-12WA	ES14-14WA	ES16-16WA
1.3	Drive unit			Battery	Battery	Battery
1.4	Operator type			Pedestrian	Pedestrian	Pedestrian
1.5	rated capacity	Q	kg	1200	1400	1600
1.6	Load center distance	c	mm	600	600	600
1.8	Load distance, centre of drive axle to fork	x	mm	688	693	693
1.9	Wheelbase	y	mm	1225	1305	1305
Weight						
2.1	Service weight (include battery)		kg	950	1050	1070
2.2	Axle loading, laden driving side/loading side		kg	715/1435	755/1695	780/1890
2.3	Axle loading, unladen driving side/loading side		kg	645/305	715/335	730/340
Types, Chassis						
3.1	Tyre type Driving wheels/Loading wheels			PU/PU	PU/PU	PU/PU
3.2	Tyre size, driving wheels (diameterxwidth)		mm	Φ230x75	Φ230x75	Φ230x75
3.3	Tyre size, loading wheels (diameterxwidth)		mm	Φ85x70	Φ85x70	Φ85x70
3.4	Tyre size, caster wheels (diameterxwidth)		mm	Φ130x55	Φ130x55	Φ130x55
3.5	Wheels, number driving, caster/loading (x=drive wheels)		mm	1x +1/4	1x +1/4	1x +1/4
3.6	Track width, front, driving side	b ₁₀	mm	538	538	538
3.7	Track width, rear, loading side	b ₁₁	mm	380/515	360/495	360/495
Dimensions						
4.2	Height, mast lowered	h ₁	mm	1970	2030	2030
4.3	Free lift	h ₂	mm	100	100	100
4.4	Lift height	h ₃	mm	2912	2912	2912
4.5	Height, mast extended	h ₄	mm	3420	3465	3465
4.9	Height drawbar in driving position min./max.	h ₁₄	mm	715/1200	715/1200	715/1200
4.15	Lowered height	h ₁₃	mm	88	88	88
4.19	Overall length	l ₁	mm	1826	1940	1940
4.20	Length to face of forks	l ₂	mm	676	787	787
4.21	Overall width	b ₁	mm	800	800	800
4.22	Fork dimensions	s/ e/ l	mm	60x170x1150	60x190x1150	60x190x1150
4.24	Fork carriage width	b ₃	mm	680	680	680
4.25	Outside width of the forks	b ₅	mm	550/685	550/685	550/685
4.32	Ground clearance, center of wheelbase	m ₂	mm	28	30	30
4.34.1	Aisle width for pallets 1000 x 1200 crossways	Ast	mm	2333	2465	2465
4.34.2	Aisle width for pallets 800 x 1200 lengthways	Ast	mm	2303	2440	2440
4.35	Turning radius	Wa	mm	1463	1589	1589
Performance data						
5.1	Travel speed, laden/ unladen		km/ h	5.0/5.5	5.0/5.5	5.0/5.5
5.2	Lifting speed, laden/ unladen		m/ s	0.10/0.16	0.13/0.16	0.13/0.16
5.3	Lowering speed, laden/ unladen		m/ s	0.19/0.18	0.22/0.13	0.22/0.13
5.8	Max. gradeability, laden/unladen		%	8/16	8/16	8/16
5.10	Service brake type			Electromagnetic	Electromagnetic	Electromagnetic
Electric-engine						
6.1	Drive motor rating S2 60 min		kW	1.1	1.1	1.1
6.2	Lift motor rating at S3 15%		kW	2.2	3	3
6.3	The maximum allowed size battery		mm	788x180x560	788x180x560	788x180x560
6.4	Battery voltage/nominal capacity K5		V/ Ah	24/210	24/210	24/230
6.5	Battery weight		kg	190	190	210
Addition data						
8.1	Type of drive unit			AC	AC	AC
10.5	Steering type			Machanical Steering	Machanical Steering	Machanical Steering
10.7	Sound pressure level at the driver's ear		dB (A)	74	74	74

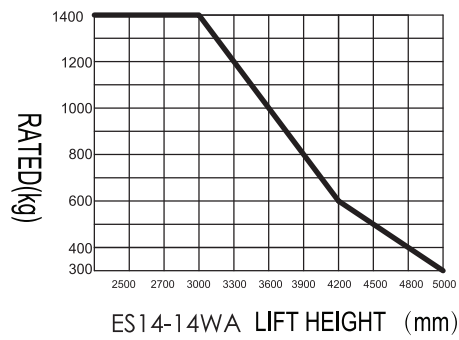
If there are improvements of technical parameters or configurations, no further notice will be given.
The diagram shown may contain non-standard configurations.



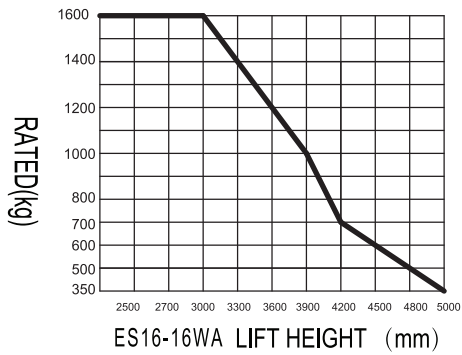
RATED CAPACITIES GRAPH



ES12-12WA LIFT HEIGHT (mm)



ES14-14WA LIFT HEIGHT (mm)



ES16-16WA LIFT HEIGHT (mm)

Mast Option

ES12-12WA

Lift h3+h13 (mm)	mast types	Lowered mast height h1 (mm)	Free lift h2 (mm)	Extended mast height h4 (mm)
2500	Duplex ZT	1720	100	2900
2700		1820	100	3100
3000		1970	100	3400
3300		2120	100	3700
3600		2270	100	4000
3900		2420	100	4300
4170		2550	100	4560
4000	Triplex DZ	1822	1390	4460
4500		2022	1590	4960
4800		2122	1690	5260
2700	Duplex ZZ	1819	1320	3119
3000		1969	1470	3419
3300		2119	1620	3719

ES14-14WA/ES16-16WA

Lift h3+h13 (mm)	mast types	Lowered mast height h1 (mm)	Free lift h2 (mm)	Extended mast height h4 (mm)
2700	Duplex ZT	1870	100	3165
3000		2020	100	3465
3300		2170	100	3765
3600		2320	100	4065
3900		2470	100	4365
4170		2600	100	4625
4000	Triplex DZ	1830	1390	4470
4500		2030	1590	4970
4800		2130	1690	5270

Option

Options	ES12-12WA	ES14-14WA/ES16-16WA
3 Fork length	●1150○1220	●1150○1220
4 Fork width	●550○685	●550○685
10 Driving wheel	●PU○Rubber wheel/PU wheel with Pattern	●PU○Rubber wheel/PU wheel with Pattern
11 Balance wheel	●	●
15 cold storage	○	○
16 Mast screen	○	○
17 Battery indicator with hour meter	●	●
18 Battery indicator without hour meter	○	○
19 Battery capacity	●210AH	○210AH/230AH
20 Lateral change battery	●	●
22 Water auto-filling system	○	○
25 Vertical handler working	○	○
26 Proportional lifting	○	○
27 Height limitation	●	●
30 Side shift	—	—
31 half speed function in turning	—	—
32 Guard arm	—	—

Note: ● standard ○ option — NA



ES20-WA

Electric Stacker 2.0t

Fits the Dual Monitoring of Traveling and Steering Motors International Safety Standard;
Ergonomic Design Offers Perfect Combination of Performance & Safety;
Best Choice for High Efficiency & Heavy Duty Handling Task,
Top Driving Speed (Optional) Reaches 12KM/H.

EP EQUIPMENT CO.,LTD
www.ep-ep.com



FEATURE



Performance

- The innovative AC system offers strong power, accurate control, excellent performance.
- High strength vertical gearbox, longer working life.
- Low-noise but durable hydraulic unit, good quality cylinder as well as hose ensure the high reliability of hydraulic system.
- AMP connector and durable electric wires greatly reduce malfunctions of components.
- CJ shape mast channel improves the strength of the whole truck.
- Applied with electric valve on & better heat releasing systems support long time operation.



Safety

- Safe hydraulic system design prevents mast from falling down abruptly when hydraulic pipeline cuts off.
- Emergency reverse belly button protects the operator from getting hurt.
- Emergency disconnecter will cut off power source to avoid accident when truck goes out of control.
- Multiple lifting limit protection ensures safety.
- Automatic switch to lower speed when the fork reaches its setting height.
- Anti-rolling back brake keeps the truck from skidding down when truck is out of control or travelling on ramp.
- Electric valve will be locked up when power is cut off.
- Dual monitoring power steering.

Operation

- With the new design of ergonomical tiller head, all buttons can be reached conveniently & comfortably.
- Foldable platform reduces vibration which makes operator feel more comfortable.
- Compact design, flexible and operational.
- When platform is folded, truck can work at low speed in smaller space.
- Side-open battery design for easy battery replacement and various applications.
- Electric proportional valve equipped as standard feature.

Maintenance

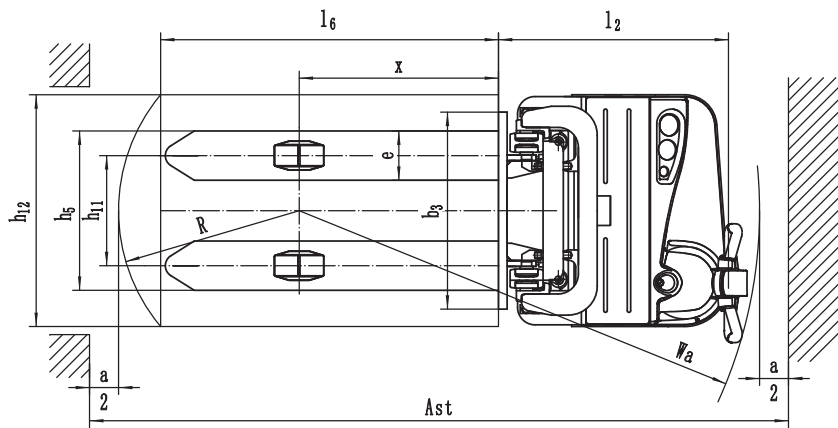
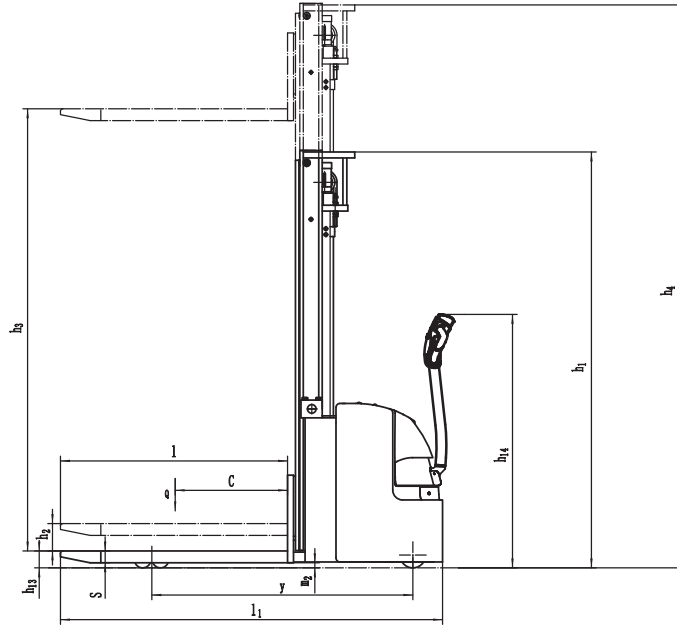
- AC traction motor, maintenance free.
- Hour meter and battery indicator remind the operator of battery charging.
- Easily remove the back cover by only losing two bolts; Access to all key components for inspection, maintenance and replacement.
- Vertical motor makes the inspection & service much more convenient.
- Control system allows easy trouble-shooting.
- Low voltage cut off setting protects batteries.

Electric Stacker2.0t

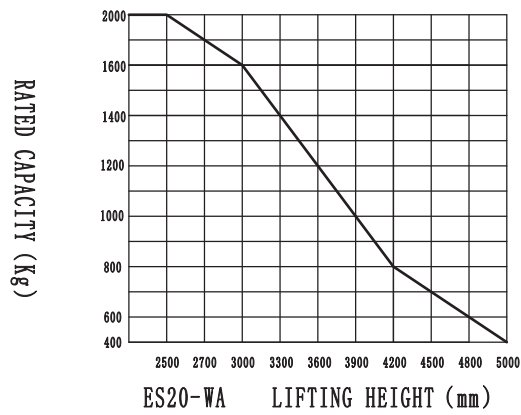
ES20-WA

Distinguishing mark				
1.1	Manufacturer			EP
1.2	Model designation			ES20-WA
1.3	Drive unit			Battery
1.4	Operator type			Pedestrian
1.5	rated capacity	Q	kg	2000
1.6	Load center distance	c	mm	600
1.8	Load distance, centre of drive axle to fork	x	mm	693
1.9	Wheelbase	y	mm	1305
Weight				
2.1	Service weight (include battery)		kg	1170
2.2	Axle loading, laden driving side/loading side		kg	850/2320
2.3	Axle loading, unladen driving side/loading side		kg	780/390
Types,Chassis				
3.1	Tyre type Driving wheels/Loading wheels			PU/PU
3.2	Tyre size, driving wheels (diameterxwidth)		mm	Φ230x75
3.3	Tyre size, loading wheels (diameterxwidth)		mm	Φ85x70
3.4	Tyre size, caster wheels (diameterxwidth)		mm	Φ130x55
3.5	Wheels, number driving, caster/loading (x=drive wheels)		mm	1x +1/4
3.6	Track width, front,driving side	b ₁₀	mm	538
3.7	Track width,rear,loading side	b ₁₁	mm	380
Dimensions				
4.2	Height, mast lowered	h ₁	mm	2020
4.3	Free lift	h ₂	mm	100
4.4	Lift height	h ₃	mm	2912
4.5	Height, mast extended	h ₄	mm	3465
4.9	Height drawbar in driving position min./max.	h ₁₄	mm	715/ 1200
4.15	Lowered height	h ₁₃	mm	88
4.19	Overall length	l ₁	mm	1940
4.20	Length to face of forks	l ₂	mm	787
4.21	Overall width	b ₁	mm	800
4.22	Fork dimensions	s/ e/ l	mm	60x190x1150
4.24	Fork carriage width	b ₃	mm	680
4.25	Outside width of the forks	b ₅	mm	600
4.32	Ground clearance, center of wheelbase	m ₂	mm	18
4.34.1	Aisle width for pallets 1000 x 1200 crossways	Ast	mm	2465
4.34.2	Aisle width for pallets 800 x 1200 lengthways	Ast	mm	2440
4.35	Turning radius	Wa	mm	1589
Performance data				
5.1	Travel speed, laden/ unladen		km/ h	4.5/5.0
5.2	Lifting speed, laden/ unladen		m/ s	0.11/0.16
5.3	Lowering speed, laden/ unladen		m/ s	0.32/0.23
5.4	Reaching speed, laden / unladen		m/ s	0.16/0.12
5.8	Max. gradeability, laden/unladen		%	6/12
5.10	Service brake type			Electromagnetic
Electric-engine				
6.1	Drive motor rating S2 60 min		kW	1.1
6.2	Lift motor rating at S3 15%		kW	3.0
6.3	The maximum allowed size battery		mm	788x180x600
6.4	Battery voltage/nominal capacity K5		V/ Ah	24/280
6.5	Battery weight		kg	240
Addition data				
8.1	Type of drive unit			AC
10.5	Steering type			Machanical Steering
10.7	Sound pressure level at the driver's ear		dB (A)	74

If there are improvements of technical parameters or configurations, no further notice will be given.
The diagram shown may contain non-standard configurations.



RATED CAPACITIES GRAPH



Mast Option

Lift h3+h13 (mm)	mast types	Lowered mast height h1 (mm)	Free lift h2 (mm)	Extended mast height h4 (mm)
2700	Duplex ZT	1870	100	3165
3000		2020	100	3465
3300		2170	100	3765
3600		2320	100	4065
3900		2470	100	4365
4170		2600	100	4625
4000	Triplex DZ	1830	1390	4470
4500		2030	1590	4970
4800		2130	1690	5270

Option

Options		ES20-WA
3	Fork length	●1150○1220
4	Fork width	●600○685
10	Driving wheel	●PU○Rubber wheel/PU wheel with Pattern
11	Balance wheel	●
15	cold storage	○
16	Mast screen	○
17	Battery indicator with hour meter	●
18	Battery indicator without hour meter	○
19	Battery capacity	●280AH
20	Lateral change battery	●
22	Water auto-filling system	○
25	Vertical handler working	○
26	Proportional lifting	○
27	Height limitation	●
30	Side shift	—
31	half speed function in turning	—
32	Guard arm	—

Note: ● standard ○ option — NA



ES08-WAi Mono Mast

Electric Stacker With Initial Lift 0.8t

Carrying Two Pallets at A Time Doubles Working Efficiency;
Extraordinary Traction in Crossing Door and Dock;
Long-tiller Design Makes Operations Easy and Convenient.

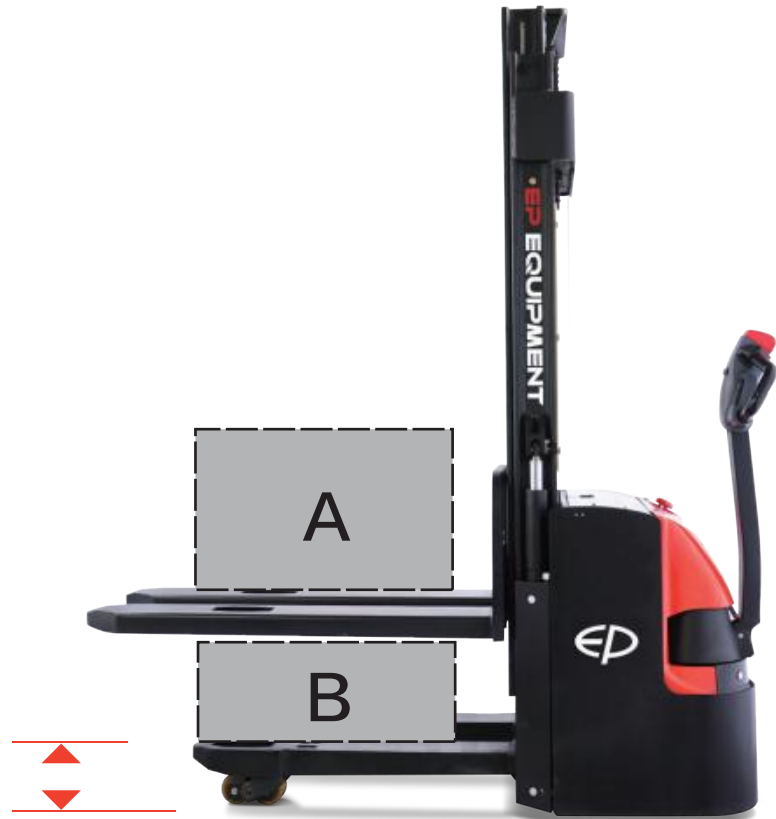
EP EQUIPMENT CO.,LTD
www.ep-ep.com



FEATURE

Performance

- The innovative AC system offers strong power, accurate control, excellent performance.
- High strength vertical gearbox, longer working life.
- Low-noise but durable hydraulic unit, good quality cylinder as well as hose ensure the high reliability of hydraulic system.
- AMP connector and durable electric wires greatly reduce malfunctions of components.
- H shape channel mast improves the strength of the whole truck.



Safety

- Safe hydraulic system design prevents mast from falling down abruptly when hydraulic pipeline cuts off.
- Emergency reverse button protects the operator from getting hurt.
- Emergency disconnect will cut off power source to avoid accident when truck goes out of control.
- Multiple lifting limit protection ensures safety.
- Automatic switch to lower speed when the fork reaches its setting height.
- Anti-rolling back brake keeps the truck from skidding down when truck is out of control or travelling on ramp.

Operation

- With the new design of ergonomical tiller head, all buttons can be reached conveniently & comfortably.
- Dual pallets lifting doubles working efficiency.
- Creep speed function: when handle in near vertical position, the driving speed will decrease automatically, allowing delicate operation in confined space.
- Long tiller decreases the operation force greatly and makes operations much easier.
- Bias Operation, Greater View.

Maintenance

- AC traction motor, maintenance free.
- Hour meter and battery indicator remind the operator of battery charging.
- Easily remove the back cover by only loosening two bolts; Access to all key components for inspection, maintenance and replacement.
- Easy access for battery maintenance.
- Vertical motor makes the inspection & service much more convenient.
- Mast and chassis are assembled together, easy for maintenance.
- Low voltage cut off setting protects batteries.

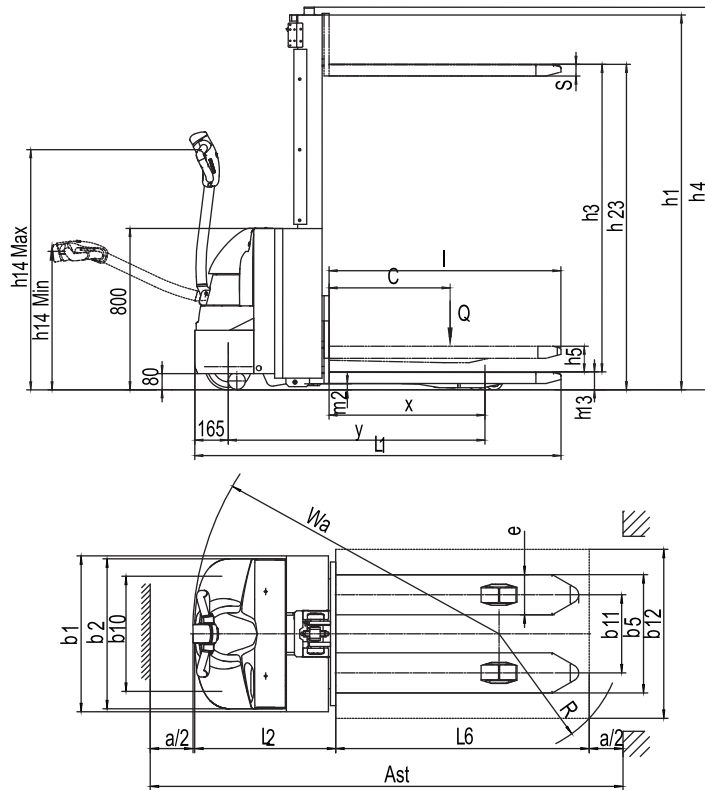
Electric Stacker 0.8t

ES08-WAi Mono Mast

Distinguishing mark				
1.1	Manufacturer			EP
1.2	Model designation			ES08-WAi
1.3	Drive unit			Electrics
1.4	Operator type			pedestrian
1.5	rated capacity	Q	kg	800
	Support arm capacity/fork and support arm capacity	Q	kg	2000
1.6	Load center distance	c	mm	600
1.8	Load distance, centre of drive axle to fork	x	mm	813
1.9	Wheelbase	y	mm	1275
Weight				
2.1	Service weight (include battery)		kg	660
2.2	Axle loading, laden driving side/loading side		kg	750/1910
2.3	Axle loading, unladen driving side/loading side		kg	450/210
Types,Chassis				
3.1	Tyre type Driving wheels/Loading wheels			pu/pu
3.2	Tyre size, driving wheels (diameterxwidth)		mm	Φ230x75
3.3	Tyre size, loading wheels (diameterxwidth)		mm	Φ85x70
3.4	Tyre size, caster wheels (diameterxwidth)		mm	Φ85x48
3.5	Wheels, number driving, caster/loading (x=drive wheels)		mm	1 x +2 / 4
3.6	Track width, front,driving side	b ₁₀	mm	505
3.7	Track width,rear,loading side	b ₁₁	mm	366
Dimensions				
4.2	Height, mast lowered	h ₁	mm	1860
4.3	Free lift	h ₂	mm	1410
4.4	Lift	h ₃	mm	1480
	Lift height	h ₂₃	mm	1685
4.5	Height, mast extended	h ₄	mm	1895
4.6	Initial lift	h ₅	mm	120
4.9	Height drawbar in driving position min./max.	h ₁₄	mm	715 / 1200
4.15	Lowered height	h ₁₃	mm	95
4.19	Overall length	l ₁	mm	1776
4.20	Length to face of forks	l ₂	mm	666
4.21	Overall width	b ₁ / b ₂	mm	738/710
4.22	Fork dimensions	s/ e/ l	mm	60/190/1150
4.24	Fork carriage width	b ₃	mm	680
4.25	Outside width of the forks	b ₅	mm	560
4.31	Ground clearance, laden, below mast	m ₁	mm	30
4.32	Ground clearance, center of wheelbase	m ₂	mm	30
4.34.1	Aisle width for pallets 1000 x 1200 crossways	Ast	mm	2274
4.34.2	Aisle width for pallets 800 x 1200 lengthways	Ast	mm	2198
4.35	Turning radius	Wa	mm	1442
Performance data				
5.1	Travel speed, laden/ unladen		km/ h	5/5.5
5.2	Lifting speed, laden/ unladen		m/ s	0.14/0.2
5.3	Lowering speed, laden/ unladen		m/ s	0.2/0.13
5.8	Max. gradeability, laden/unladen		%	8/16
5.10	Service brake type			Electromagnetic
Electric-engine				
6.1	Drive motor rating S2 60 min		kW	1.27
6.2	Lift motor rating at S3 15%		kW	2.2
6.3	The maximum allowed size battery		mm	260x260x180
6.4	Battery voltage/nominal capacity K20		V/ Ah	4x6v/224
6.5	Battery weight		kg	4x30
Addition data				
8.1	Type of drive unit			AC
10.5	Steering type			Mechanical
10.7	Sound pressure level at the driver's ear		dB(A)	74

If there are improvements of technical parameters or configurations, no further notice will be given.
The diagram shown may contain non-standard configurations.

ES08-WAi



RATED CAPACITIES GRAPH

		lift Height (mm)	Capacity (kg)
	Mast Fork A	1600	800
	Support Arm B	210	A+B≤2000

Option

Options	ES08-WAi
Fork length	—
Fork width	—
Mast screen	—
Driving wheel	●PU ○Rubber wheel/PU wheel with Pattern
Balance wheel	●
Battery capacity	○224AH
Lateral change battery	—
cold storage	○
Battery indicator with hour meter	●
Battery indicator without hour meter	○
Proportional lifting	○
Height limitation	○
half speed function in turning	—
Vertical handler working	○
Side shift	—
Water auto-filling system	○
Guard arm	—
Note: ● standard ○ option — NA	



ES12-12Wai/ EPT20-20Wai Electric Stacker 1.2t/ Electric Pallet Truck 2.0t

Carrying Two Pallets at A Time Doubles Working Efficiency;
Extraordinary Traction in Crossing Door and Dock;
Long-tiller Design Makes Operations Easy and Convenient.

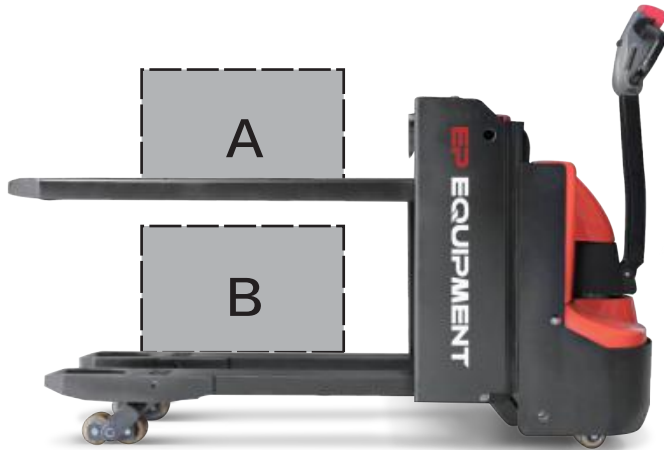
EP EQUIPMENT CO.,LTD
www.ep-ep.com



FEATURE

Performance

- The innovative AC system offers strong power, accurate control, excellent performance.
- High strength vertical gearbox, longer working life.
- Low-noise but durable hydraulic unit, good quality cylinder as well as hose ensure the high reliability of hydraulic system.
- AMP connector and durable electric wires greatly reduce malfunctions of components.
- H shape channel mast improves the strength of the whole truck.



EPT20-20Wai



ES12-12Wai

Safety

- Safe hydraulic system design prevents mast from falling down abruptly when hydraulic pipeline cuts off.
- Emergency reverse belly button protects the operator from getting hurt.
- Emergency disconnecter will cut off power source to avoid accident when truck goes out of control.
- Multiple lifting limit protection ensures safety.
- Automatic switch to lower speed when the fork reaches its setting height.
- Anti-rolling back brake keeps the truck from skidding down when truck is out of control or travelling on ramp.

Operation

- With the new design of ergonomical tiller head, all buttons can be reached conveniently & comfortably.
- Dual pallets lifting doubles working efficiency.
- Creep speed function: when handle in near vertical position, the driving speed will decrease automatically, allowing delicate operation in confined space.
- Long tiller decreases the operation force greatly and makes operations much easier.
- Bias Operation, Greater View.

Maintenance

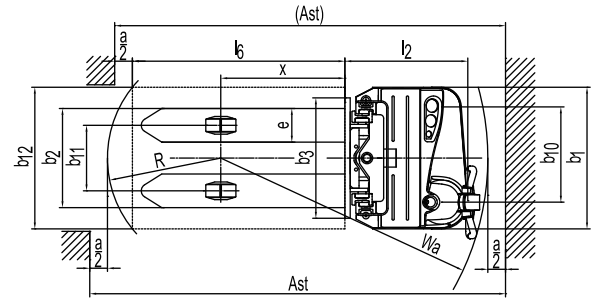
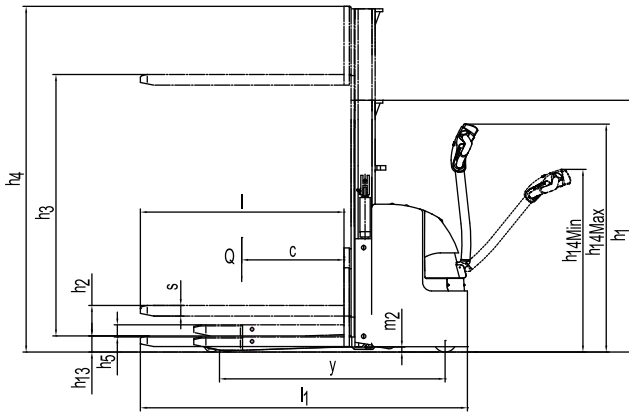
- AC traction motor, maintenance free.
- Hour meter and battery indicator remind the operator of battery charging.
- Easily remove the back cover by only losing two bolts; Access to all key components for inspection, maintenance and replacement.
- Easy access for battery maintenance.
- Vertical motor makes the inspection & service much more convenient.
- Mast and chassis are assembled together, easy for maintenance.
- Low voltage cut off setting protects batteries.

Electric Stacker 1.2t

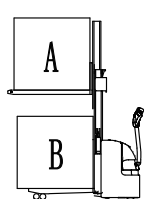
ES12-12Wai

Distinguishing mark				
1.1	Manufacturer			EP
1.2	Model designation			ES12-12Wai
1.3	Drive unit			Battery
1.4	Operator type			Pedestrian
1.5	rated capacity	Q	kg	1200
1.6	Load center distance	c	mm	600
1.8	Load distance, centre of drive axle to fork	x	mm	701
1.9	Wheelbase	y	mm	1275
Weight				
2.1	Service weight (include battery)		kg	940
2.2	Axle loading, laden driving side/loading side		kg	735/1405
2.3	Axle loading, unladen driving side/loading side		kg	640/300
Types,Chassis				
3.1	Tyre type Driving wheels/Loading wheels			PU/PU
3.2	Tyre size, driving wheels (diameterxwidth)		mm	Φ230x75
3.3	Tyre size, loading wheels (diameterxwidth)		mm	Φ85x70
3.4	Tyre size, caster wheels (diameterxwidth)		mm	Φ130x55
3.5	Wheels, number driving, caster/loading (x=drive wheels)		mm	1x +1/4
3.6	Track width, front,driving side	b ₁₀	mm	538
3.7	Track width,rear,loading side	b ₁₁	mm	370
Dimensions				
4.2	Height, mast lowered	h ₁	mm	1970
4.3	Free lift	h ₂	mm	100
4.4	Lift height	h ₃	mm	2915
4.5	Height, mast extended	h ₄	mm	3529
4.6	Initial lift	h ₅	mm	120
4.9	Height drawbar in driving position min./max.	h ₁₄	mm	715/1200
4.15	Lowered height	h ₁₃	mm	95
4.19	Overall length	l ₁	mm	1847
4.20	Length to face of forks	l ₂	mm	697
4.21	Overall width	b ₁	mm	800
4.22	Fork dimensions	s/ e/ l	mm	60x190x1150
4.24	Fork carriage width	b ₃	mm	680
4.25	Outside width of the forks	b ₅	mm	560
4.32	Ground clearance, center of wheelbase	m ₂	mm	30
4.34.1	Aisle width for pallets 1000 x 1200 crossways	Ast	mm	2378
4.34.2	Aisle width for pallets 800 x 1200 lengthways	Ast	mm	2350
4.35	Turning radius	Wa	mm	1510
Performance data				
5.1	Travel speed, laden/ unladen		km/ h	5.0/5.5
5.2	Lifting speed, laden/ unladen		m/ s	0.11/0.16
5.3	Lowering speed, laden/ unladen		m/ s	0.19/0.18
5.8	Max. gradeability, laden/unladen		%	8/ 16
5.10	Service brake type			Electromagnetic
Electric-engine				
6.1	Drive motor rating S2 60 min		kW	1.1
6.2	Lift motor rating at S3 15%		kW	2.2
6.3	The maximum allowed size battery		mm	788x180x560
6.4	Battery voltage/nominal capacity K5		V/ Ah	24/210
6.5	Battery weight		kg	190
Addition data				
8.1	Type of drive unit			AC
10.5	Steering type			Machanical Steering
10.7	Sound pressure level at the driver's ear		dB (A)	74

If there are improvements of technical parameters or configurations, no further notice will be given.
The diagram shown may contain non-standard configurations.



ES12-12WAI RATED CAPACITIES GRAPH

		lift Height (mm) 起升高度	Capacity (kg) 额定载荷
	Mast Fork 货叉 A	1600	1200
		2700	1100
		3000	1000
		3300	800
		3600	600
	Support Arm 内叉腿 B	210	A+B ≤ 2000

Mast Option

mast types	Lift h3+h13 (mm)	Lowered mast height h1 (mm)	Free lift h2 (mm)	Extended mast height h4 (mm)
Duplex ZT	1600	1265	100	2119
	2710	1820	100	3229
	3010	1970	100	3529
	3310	2120	100	3829
	3610	2270	100	4129

Option

Options	ES12-12WAI
Fork length	—
Fork width	—
Mast screen	●plexi board
Driving wheel	●PU ○Rubber wheel/PU wheel with Pattern
Balance wheel	●
Battery capacity	○165AH/210AH/230AH
Lateral change battery	●
cold storage	○
Battery indicator with hour meter	●
Battery indicator without hour meter	○
Proportional lifting	○
Height limitation	○
half speed function in turning	—
Vertical handler working	○
Side shift	—
Water auto-filling system	○
Guard arm	—

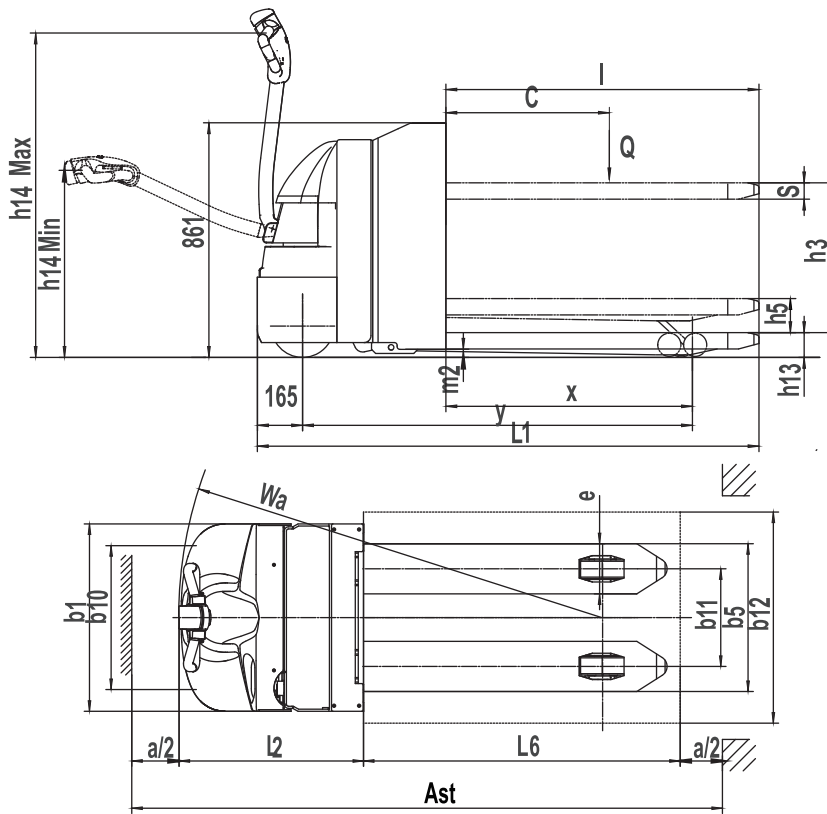
Note: ● standard ○ option — NA

Electric Pallet Truck 2.0t

EPT20-20WAI

Distinguishing mark				
1.1	Manufacturer			EP
1.2	Model designation			EPT20-20WAI
1.3	Drive unit			Electrics
1.4	Operator type			pedestrian
1.5	rated capacity	Q	kg	2000
1.6	Load center distance	c	mm	600
1.8	Load distance	x	mm	905
1.9	Wheelbase	y	mm	1441
Weight				
2.1	Service weight (include battery)		kg	625
2.2	Axle loading, laden driving side/loading side		kg	910/1715
2.3	Axle loading, unladen driving side/loading side		kg	420/205
Types,Chassis				
3.1	Tyre type driving wheels/loading wheels			PU / PU
3.2	Tyre size, driving wheels (diameterxwidth)		mm	Φ230x75
3.3	Tyre size, loading wheels (diameterxwidth)		mm	Φ85x70
3.4	Tyre size, caster wheels (diameterxwidth)		mm	Φ85x48
3.5	Wheels, number driving, caster/loading (x=drive wheels)		mm	1 x +2 / 4
3.6	Track width, front,driving side	b ₁₀	mm	498
3.7	Track width,rear,loading side	b ₁₁	mm	366
Dimensions				
4.4	Lift	h ₃	mm	540
4.6	Initial lift	h ₅	mm	120
4.9	Height drawbar in driving position min./max.	h ₁₄	mm	715 / 1200
4.15	Lowered height	h ₁₃	mm	95
4.19	Overall length	l ₁	mm	1850
4.20	Length to face of forks	l ₂	mm	694
4.21	Overall width	b ₁ / b ₂	mm	710
4.22	Fork dimensions	s/ e/ l	mm	60/190/1150
4.25	Outside width of the forks	b ₅	mm	560
4.32	Ground clearance, center of wheelbase	m ₂	mm	30
4.34.1	Aisle width for pallets 1000 x 1200 crossways	Ast	mm	1913
4.34.2	Aisle width for pallets 800 x 1200 lengthways	Ast	mm	2113
4.35	Turning radius	Wa	mm	1615
Performance data				
5.1	Travel speed, laden/ unladen		km/h	5/5.5
5.2	support arm Lifting speed, laden/ unladen		m/ s	0.024/0.025
5.21	mast Lifting speed, laden/ unladen		m/ s	0.071/0.121
5.3	support arm Lowering speed, laden/ unladen		m/ s	0.050/0.032
5.31	mast Lifting speed, laden/ unladen		m/ s	0.13/0.1
5.8	Max. gradeability, laden/unladen			8/16
5.10	Service brake type			Electromagnetic
Electric-engine				
6.1	Drive motor rating S2 60 min		kW	1.27
6.2	Lift motor rating at S3 15%		kW	0.84
6.3	The maximum allowed size battery		mm	650X150X625
6.4	Battery voltage/nominal capacity K5			24/150
6.5	Battery weight		kg	140
Addition data				
8.1	Type of drive control			AC
10.5	Steering type			Mechanical
10.7	Sound pressure level at the driver's ear			74

If there are improvements of technical parameters or configurations, no further notice will be given.
The diagram shown may contain non-standard configurations.



EPT20-20Wai RATED CAPACITIES GRAPH

		lift Height (mm)	Capacity (kg)
	Mast Fork A	630	650
	Support Arm B	210	$A+B \leq 2000$

Option

Options	EPT20-20Wai
Fork length	○ 1150mm
Fork width	—
Double load wheel	●
Single load wheel	●
Fork lowered height	—
Driving wheel	●PU
Balance wheel	—
Battery capacity	○180AH
Lateral change battery	—
Cold storage	○
Battery indicator without hour meter	○
Battery indicator with hour meter	●
Water auto-filling system	○
Vertical handler working	—
Half speed function in turning	—
Guard arm	—
Special backrest	○1220mm (48in)/1520mm (60in)

Note: ● standard ○ option — NA



RSB141

Electric Stacker 1.4T

- Strong drive power
- Operation safety assurance
- Easy steering

EP EQUIPMENT CO.,LTD
www.ep-ep.com

FEATURE

Strong drive power

RSB141 adopts EP's second generation BLDC motor drive technology to offer strong drive power and save the maintenance trouble of replacing carbon brushes.



Easy steering

The truck is equipped with electronic steering as standard to reduce steering strains and to offer better maneuverability in operation.



Operation safety assurance

RSB141 is proven safety by passing the industrial rollover test. Intelligence auto-break making it a safe helper when working on the slope. The low ground clearance also lowers the risk of foot injuries significantly.

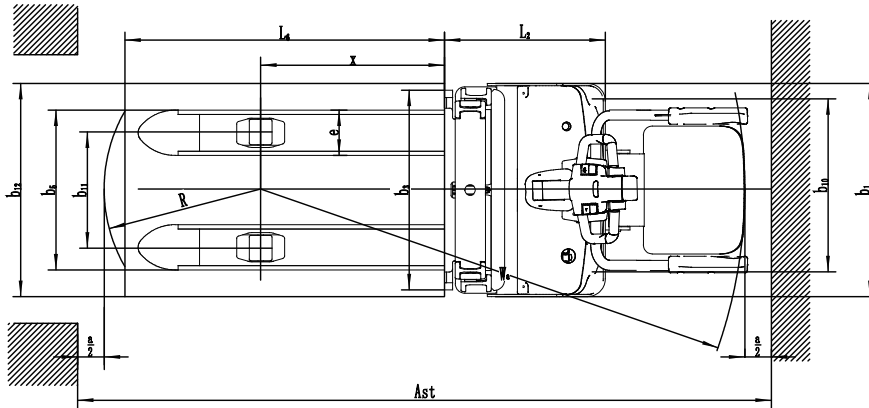
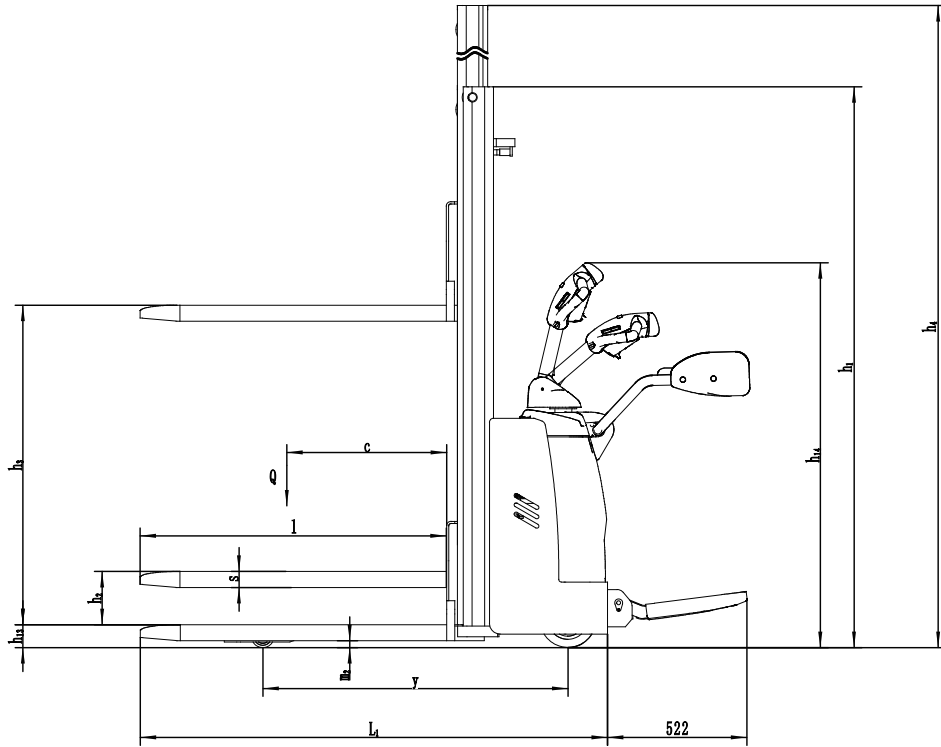


Electric Stacker 1.4T

RSB141

Distinguishing mark				
1.1	Manufacturer			EP
1.2	Model designation			RSB141
1.3	Drive unit			Battery
1.4	Operator type			standing
1.5	rated capacity	Q	kg	1400
1.6	Load center distance	c	mm	600
1.8	Load distance, centre of drive axle to fork	x	mm	690
1.9	Wheelbase	y	mm	1145
Weight				
2.1	Service weight (include battery)		kg	770
2.2	Axle loading, laden driving side/loading side		kg	620/1550
2.3	Axle loading, unladen driving side/loading side		kg	530/240
Types,Chassis				
3.1	Tyre type Driving wheels/Loading wheels			PU/PU
3.2	Tyre size, driving wheels (diameterxwidth)		mm	Φ230x75
3.3	Tyre size, loading wheels (diameterxwidth)		mm	Φ85x95
3.4	Tyre size, caster wheels (diameterxwidth)		mm	Φ130x55
3.5	Wheels, number driving, caster/loading (x=drive wheels)		mm	1x +1/2
3.6	Track width, front,driving side	b10	mm	539
3.7	Track width,rear,loading side	b11	mm	436
Dimensions				
4.2	Height, mast lowered	h1	mm	1970
4.3	Free lift	h2	mm	/
4.4	Lift height	h3	mm	2930
4.5	Height, mast extended	h4	mm	3425
4.9	Height drawbar in driving position min./max.	h14	mm	1150/1480
4.15	Lowered height	h13	mm	85
4.19	Overall length	l1	mm	1754
4.20	Length to face of forks	l2	mm	604
4.21	Overall width	b1	mm	800
4.22	Fork dimensions	s/ e/ l	mm	60x170x1150
4.24	Fork carriage width	b3	mm	750
4.25	Distance between fork-arms	b5	mm	600
4.32	Ground clearance, center of wheelbase	m2	mm	25
4.34.1	Aisle width for pallets 1000 x 1200 crossways	Ast	mm	2330
4.34.2	Aisle width for pallets 800 x 1200 lengthways	Ast	mm	2300
4.35	Turning radius	Wa	mm	1455
Performance data				
5.1	Travel speed, laden/ unladen		km/ h	5/5.5
5.2	Lifting speed, laden/ unladen		m/ s	0.10/0.18
5.3	Lowering speed, laden/ unladen		m/ s	0.29/0.19
5.8	Max. gradeability, laden/unladen		%	3/10
5.10	Service brake type			Electromagnetic
Electric-engine				
6.1	Drive motor rating S2 60 min		kW	0.9
6.2	Lift motor rating at S3 15%		kW	2.2
6.3	The maximum allowed size battery		mm	260x165x210
6.4	Battery voltage/nominal capacity K5		V/ Ah	48/85
6.5	Battery weight		kg	15x4
Addition data				
8.1	Type of drive unit			DC
10.5	Steering type			Electronic
10.7	Sound pressure level at the driver's ear		dB (A)	74

If there are improvements of technical parameters or configurations, no further notice will be given.
The diagram shown may contain non-standard configurations.



RATED CAPACITIES GRAPH



Mast Option

Mast types	Close Mast height h1	Free height h2	lift height h3+h13	Extended Mast Height h4
Two Stage Mast (Wide view)	1710	/	2500	2925
	1810	/	2700	3125
	1960	/	3000	3425
	2110	/	3300	3725
	2260	/	3600	4025
	2410	/	3900	4325

Option

Optional items		RSB141
1	Fork length	1150/1220
2	Fork width	685/600/570
9	Single load wheel	●
10	Driving wheel	●
11	Balance wheel	●
15	cold storage	—
17	Battery indicator with hour meter	●
18	Battery indicator without hour meter	—
19	Battery capacity	85Ah●
20	Lateral change battery	—
22	Water auto-filling system	—
25	Vertical handler working	—
31	half speed function in turning	—
32	Guard arm	—
33	Fork lowered height	—
34	Special backrest	—

Note: ● standard ○ option — NA



ES16-RS

Electric Stacker 1.6t

High Strength Structure Suits High Racking Applications;
Various Options Such As Foldable Platform, Protection Arm
& Power Steering
Side positioned drive system, easy to manage stability

EP EQUIPMENT CO.,LTD
www.ep-ep.com



FEATURE



Performance:

- The innovative AC system offers strong power, accurate control, excellent performance.
- High strength vertical gearbox, longer working life.
- Low-noise but durable hydraulic unit, good quality cylinder as well as hose ensure the high reliability of hydraulic system.
- AMP connector electric wires and cables, greatly reducing electric parts failure rate.
- H shape channel mast improves the strength of the whole truck.
- High strength chassis enhances the reliability and durability of the truck.

Safety:

- Safe hydraulic system design prevents mast from falling down abruptly when hydraulic pipeline cuts off.
- Full speed will be only available when protection arms are open, low speed mode will be automatic on otherwise.
- Emergency reverse belly button protects the operator from getting hurt.
- Emergency disconnecter will cut off power source to avoid accident when truck goes out of control.
- Multiple lifting limit protection ensures safety.
- Automatic switch to lower speed when the fork reaches its setting height.
- Auto-slow down feature on turning, ensure smooth and safe operation.
- Anti-rolling back brake keeps the truck from skidding down when truck is out of control or travelling on ramp.
- Dual monitoring power steering system

Maintenance:

- AC traction motor, maintenance free.
- Hour meter and battery indicator remind the operator of battery charging.
- Remove the back cover by only loosening four bolts; Easy access to all key components for inspection, maintenance and replacement.
- Easy access for battery maintenance.
- Vertical motor makes the inspection & service much more convenient.
- Control system allows easy troubleshooting.
- Mast and chassis are assembled together, easy for maintenance.
- Low voltage cut off setting protects batteries.

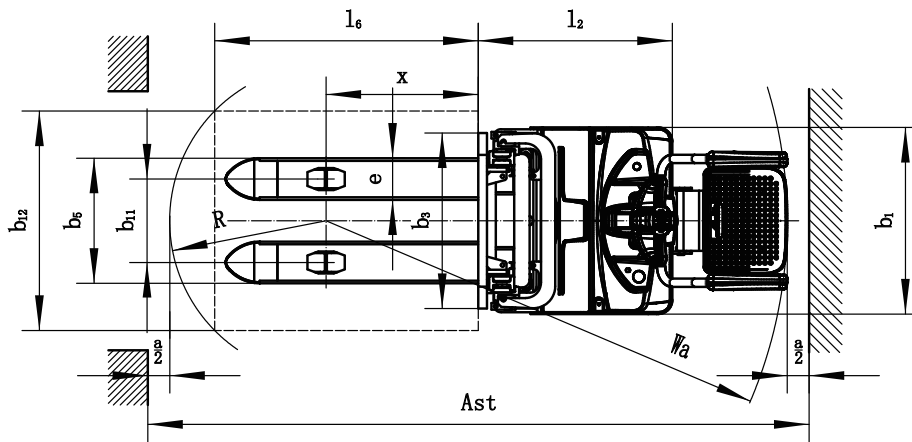
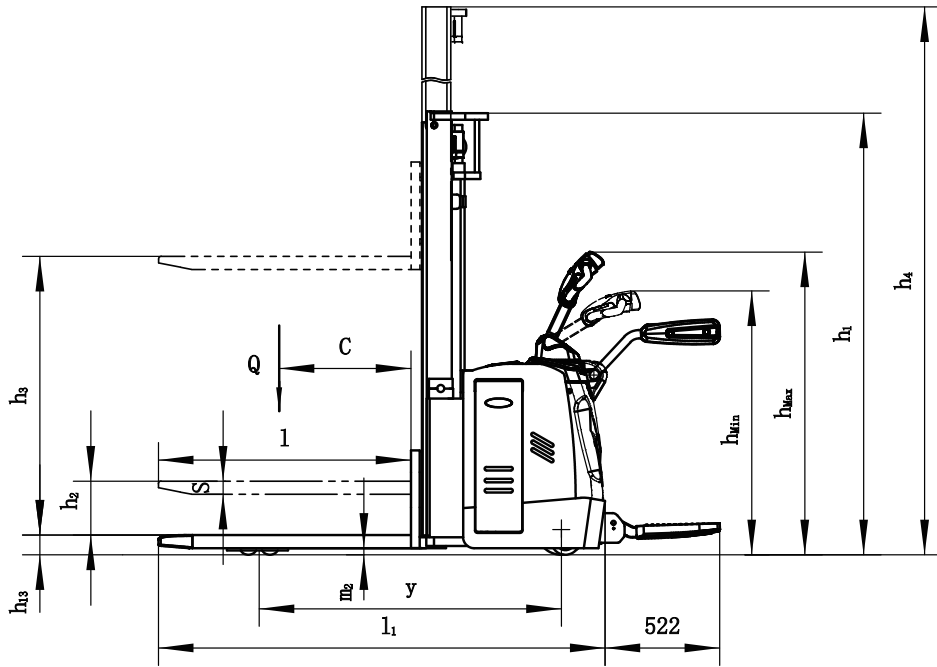
Operation:

- Ergonomic tiller bounded with key switch, BDI and trouble shooting indicator enhances easy and accurate operation.
- Foldable platform reduces vibration which makes operator feel more comfortable when driving.
- When platform is folded, truck can work at low speed in smaller space.
- Ergonomical and durable protection arms guarantee easy operation, with innovative on/off design.
- Electric power steering, smooth & comfortable (EPS).

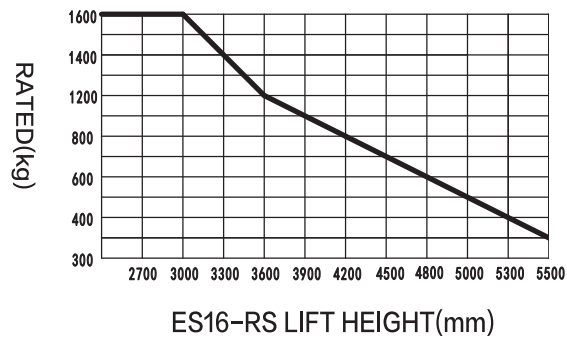
Electric Stacker 1.6t ES16-RS

Distinguishing mark				
1.1	Manufacturer			EP
1.2	Model designation			ES16-RS
1.3	Drive unit			Electric
1.4	Operator type			Standing
1.5	rated capacity	Q	kg	1600
1.6	Load center distance	c	mm	600
1.8	Load distance, centre of drive axle to fork	x	mm	693
1.9	Wheelbase	y	mm	1375
Weight				
2.1	Service weight (include battery)		kg	1240
2.2	Axle loading, laden driving side/loading side		kg	960/1880
2.3	Axle loading, unladen driving side/loading side		kg	860/380
Types, Chassis				
3.1	Tyre type Driving wheels/Loading wheels			PU/PU
3.2	Tyre size, driving wheels (diameter×width)		mm	Φ230×75
3.3	Tyre size, loading wheels (diameter×width)		mm	Φ85×70
3.4	Tyre size, caster wheels (diameter×width)		mm	Φ130×55
3.5	Wheels, number driving, caster/loading (x=drive wheels)		mm	1x +1/4
3.6	Track width, front, driving side	b ₁₀	mm	574
3.7	Track width, rear, loading side	b ₁₁	mm	380/410/495
Dimensions				
4.2	Height, mast lowered	h ₁	mm	2020
4.3	Free lift	h ₂	mm	100
4.4	Lift height	h ₃	mm	2912
4.5	Height, mast extended	h ₄	mm	3465
4.9	Height drawbar in driving position min./max.	h ₁₄	mm	1150/1480
4.15	Lowered height	h ₁₃	mm	88
4.19	Overall length	l ₁	mm	2030
4.20	Length to face of forks	l ₂	mm	879
4.21	Overall width	b ₁	mm	850
4.22	Fork dimensions	s/ e/ l	mm	60×190×1150
4.24	Fork carriage width	b ₃	mm	800
4.25	Outside width of the forks	b ₅	mm	570/600/685
4.32	Ground clearance, center of wheelbase	m ₂	mm	28
4.34.1	Aisle width for pallets 1000 × 1200 crossways	Ast	mm	2605/2965
4.34.2	Aisle width for pallets 800 × 1200 lengthways	Ast	mm	2575/2935
4.35	Turning radius	Wa	mm	1730/2090
Performance data				
5.1	Travel speed, laden/ unladen		km/ h	5.5/6.0
5.2	Lifting speed, laden/ unladen		m/ s	0.13/0.16
5.3	Lowering speed, laden/ unladen		m/ s	0.30/0.22
5.8	Max. gradeability, laden/unladen		%	8/16
5.10	Service brake type			Electromagnetic
Electric-engine				
6.1	Drive motor rating S2 60 min		kW	1.6
6.2	Lift motor rating at S3 15%		kW	3.0
6.3	The maximum allowed size battery		mm	834×216×630
6.4	Battery voltage/nominal capacity K5		V/ Ah	24/210
6.5	Battery weight		kg	200
Addition data				
8.1	Type of drive unit			AC
10.5	Steering type			Electronic
10.7	Sound pressure level at the driver's ear		dB (A)	74

If there are improvements of technical parameters or configurations, no further notice will be given.
The diagram shown may contain non-standard configurations.



RATED CAPACITIES GRAPH



Mast Option

Lift h3+h13 (mm)	mast types	Lowered mast height h1 (mm)	Free lift h2 (mm)	Extended mast height h4 (mm)
2700	Duplex ZT	1870	100	3165
3000		2020	100	3465
3300		2170	100	3765
3600		2320	100	4065
3900		2470	100	4365
4170		2600	100	4625
4000	Triplex DZ	1822	1390	4460
4500		2022	1590	4960
4800		2122	1690	5260
5000		2187	1740	5460
5300		2287	1840	5760
5500		2352	1910	5910
2700	Duplex ZZ	1819	1320	3135
3000		1969	1470	3435
3300		2119	1620	3735

Option

Options		ES16-RS
3	Fork length	●1150○1220
4	Fork width	●570○600/685
10	Driving wheel	●PU○Rubber wheel/PU wheel with Pattern
11	Balance wheel	●
15	cold storage	○
16	Mast screen	○
17	Battery indicator with hour meter	●
18	Battery indicator without hour meter	○
19	Battery capacity	●210AH○230AH/280AH
20	Lateral change battery	●
22	Water auto-filling system	○
25	Vertical handler working	—
26	Proportional lifting	○
27	Height limitation	●
30	Side shift	—
31	half speed function in turning	●
32	Guard arm	●

Note: ● standard ○ option — NA



ES 16-RSi

Electric Stacker 1.6t

- Carrying two pallets at a time doubles working efficiency
- Extraordinary traction crossing door and dock
- High strength struture suits high racking applications
- Various options such as foldable platform, protection arm & power steering
- Side positioned drive system, easy to manage stability

EP EQUIPMENT CO.,LTD
www.ep-ep.com

FEATURE

Performance

- The innovative AC system offers strong power, accurate control, excellent performance.
- High strength vertical gearbox, longer working life.
- Low-noise but durable hydraulic unit, good quality cylinder as well as hose ensure the high reliability of hydraulic system.
- AMP connector and durable electric wires greatly reduce malfunctions of components.
- H shape channel mast improves the strength of the whole truck.
- High speed(Up to 6 km/h unladen), High Efficiency of Material Handling Operations.



Safety

- Safe hydraulic system design prevents mast from falling down abruptly when hydraulic pipeline cuts off.
- Full speed will be only available when protection arms are open, low speed mode will be automatic on otherwise.
- Emergency reverse belly button protects the operator from getting hurt.
- Emergency disconnecter will cut off power source to avoid accident when truck goes out of control.
- Multiple lifting limit protection ensures safety.
- Automatic switch to lower speed when the fork reaches its setting height.
- Anti-rolling back brake keeps the truck from skidding down when truck is out of control or travelling on ramp.
- Auto-slow down feature on turning (EPS)
- Dual-monitoring power steering system.

Operation

- With the new design of ergonomical tiller head, all buttons can be reached conveniently & comfortably.
- Dual pallets lifting doubles working efficiency.
- Foldable platform reduces vibration which makes operator feel more comfortable when driving.
- When platform is folded, truck can work at low speed in smaller space.
- Ergonomical and durable protection arms guarantee easy operation with, innovative on/off design.
- Electric power steering, smooth & comfortable (EPS).

Maintenance

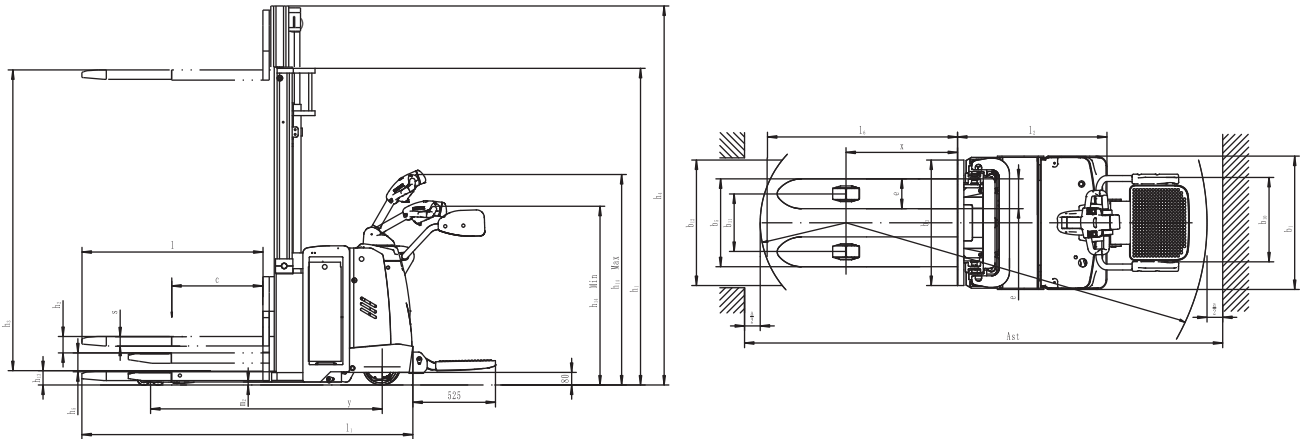
- AC traction motor, maintenance free.
- Hour meter and battery indicator remind the operator of battery charging.
- Remove the back cover by only losing two bolts; Easy access to all key components for inspection, maintenance and replacement.
- Easy access for battery maintenance.
- Vertical motor makes the inspection & service much more convenient.
- Control system allows easy trouble-shooting.
- Mast and chassis are assembled together, easy for maintenance.
- Low voltage cut off setting protects batteries.

Electric Stacker 1.6t

ES16-RSi

Distinguishing mark				
1.1	Manufacturer			EP
1.2	Model designation			ES16-RSi
1.3	Drive unit			Electric
1.4	Operator type			standing
1.5	rated capacity	Q	kg	1600
1.6	Load center distance	c	mm	600
1.8	Load distance, centre of drive axle to fork	x	mm	710
1.9	Wheelbase	y	mm	1460
Weight				
2.1	Service weight (include battery)		kg	1335
2.2	Axle loading, laden driving side/loading side		kg	1075/1860
2.3	Axle loading, unladen driving side/loading side		kg	935/400
Types,Chassis				
3.1	Tyre type Driving wheels/Loading wheels			PU/PU
3.2	Tyre size, driving wheels (diameterxwidth)		mm	Φ230x75
3.3	Tyre size, loading wheels (diameterxwidth)		mm	Φ85x70
3.4	Tyre size, caster wheels (diameterxwidth)		mm	Φ130x55
3.5	Wheels, number driving, caster/loading (x=drive wheels)		mm	1 x +1 / 4
3.6	Track width, front,driving side	b ₁₀	mm	574
3.7	Track width,rear,loading side	b ₁₁	mm	366
Dimensions				
4.2	Height, mast lowered	h ₁	mm	2020
4.3	Free lift	h ₂	mm	100
4.4	Lift	h ₃	mm	2907
	Lift height	h ₂₃	mm	3000
4.5	Height, mast extended	h ₄	mm	3460
4.6	Initial lift	h ₅	mm	120
4.9	Height drawbar in driving position min./max.	h ₁₄	mm	1150/1480
4.15	Lowered height	h ₁₃	mm	93
4.19	Overall length	l ₁	mm	2195
4.20	Length to face of forks	l ₂	mm	957
4.21	Overall width	b ₁ / b ₂	mm	850
4.22	Fork dimensions	s/ e/ l	mm	60/190/1150
4.24	Fork carriage width	b ₃	mm	800
4.25	Outside width of the forks	b ₅	mm	560
4.31	Ground clearance, laden, below mast	m ₁	mm	20
4.32	Ground clearance, center of wheelbase	m ₂	mm	20
4.34.1	Aisle width for pallets 1000 x 1200 crossways	Ast	mm	2665/3092
4.34.2	Aisle width for pallets 800 x 1200 lengthways	Ast	mm	2597/3024
4.35	Turning radius	Wa	mm	1765/2192
Performance data				
5.1	Travel speed, laden/ unladen		km/ h	5.5/6
5.2	Lifting speed, laden/ unladen		m/ s	0.11/0.16
5.3	Lowering speed, laden/ unladen		m/ s	0.14/0.12
5.8	Max. gradeability, laden/unladen		%	8/16
5.10	Service brake type			Electromagnetic
Electric-engine				
6.1	Drive motor rating S2 60 min		kW	1.6
6.2	Lift motor rating at S3 15%		kW	3
6.3	The maximum allowed size battery		mm	815X630X208
6.4	Battery voltage/nominal capacity		V/ Ah	280
6.5	Battery weight		kg	270
Addition data				
8.1	Type of drive unit			AC
10.5	Steering type			Electronic
10.7	Sound pressure level at the driver's ear			74

If there are improvements of technical parameters or configurations, no further notice will be given.
The diagram shown may contain non-standard configurations.



Mast Option

mast types	Lift h3+h13 (mm)	Lowered mast height h1 (mm)	Free lift h2 (mm)	Extended mast height h4 (mm)
Duplex ZT	2700	1870	100	3165
	3000	2020	100	3465
	3300	2170	100	3765
	3600	2320	100	4065
	3900	2470	100	4365
	4200	2600	100	4625
Triplex DZ	4000	1822	1390	4460
	4500	2022	1590	4960
	4800	2122	1690	5260
	5000	2187	1760	5460

Option

Options	ES16-RSi
Fork length	●1150 ○1220
Fork width	—
Mast screen	—
Driving wheel	●PU ○Rubber wheel/Pu wheel with pattern
Balance wheel	—
Battery capacity	●280AH ○360AH
Lateral change battery	—
cold storage	—
Battery indicator with hour meter	●
Battery indicator without hour meter	○
Proportional lifting	—
Height limitation	—
half speed function in turning	●
Vertical handler working	—
Side shift	—
Water auto-filling system	○
Guard arm	—

Note: ● standard ○ option — NA



ES20-20RAS

Electric Stacker 2.0t

Great Option for Heavy Duty & High Stacking Tasks:
High Strength Structure Suits High Racking Applications;
Various Options Such As Foldable Platform, Protection Arm & Power Steering

EP EQUIPMENT CO.,LTD
www.ep-ep.com



FEATURE

Performance

- The innovative AC system offers strong power, accurate control, excellent performance.
- High strength vertical gearbox, longer working life.
- Low-noise but durable hydraulic unit, good quality cylinder as well as hose ensure the high reliability of hydraulic system.
- AMP connector and durable electric wires greatly reduce malfunctions of components.
- H shape channel mast improves the strength of the whole truck.
- High strength chassis enhances the reliability and durability of the truck.
- Innovative Drive floating operation system(DFA) ensures the stability of the truck when steering at high speed.



Safety

- Safe hydraulic system design prevents mast from falling down abruptly when hydraulic pipeline cuts off.
- Full speed will be only available when protection arms are up, low speed mode will be automatically on otherwise.
- Emergency reverse belly button protects the operator from getting hurt.
- Emergency disconnecter will cut off power source to avoid accident when truck goes out of control.
- Multiple lifting limit protection ensures safety.
- Automatic switch to lower speed when the fork reaches its setting height.
- Anti-rolling back brake keeps the truck from skidding down when truck is out of control or travelling on ramp.
- Dual-monitoring power steering.

Operation

- With the new design of ergonomical tiller head, all buttons can be reached conveniently & comfortably.
- Foldable platform reduces vibration which makes operator feel more comfortable when driving.
- The unique suspension driving floating system(DFA) design makes operations easy and comfortable.
- When platform is folded, truck can work at low speed in smaller space.
- Ergonomical and durable protection arm guarantees easy operation, with innovative on/off design.
- Electric power steering, smooth & comfortable (EPS).

Maintenance

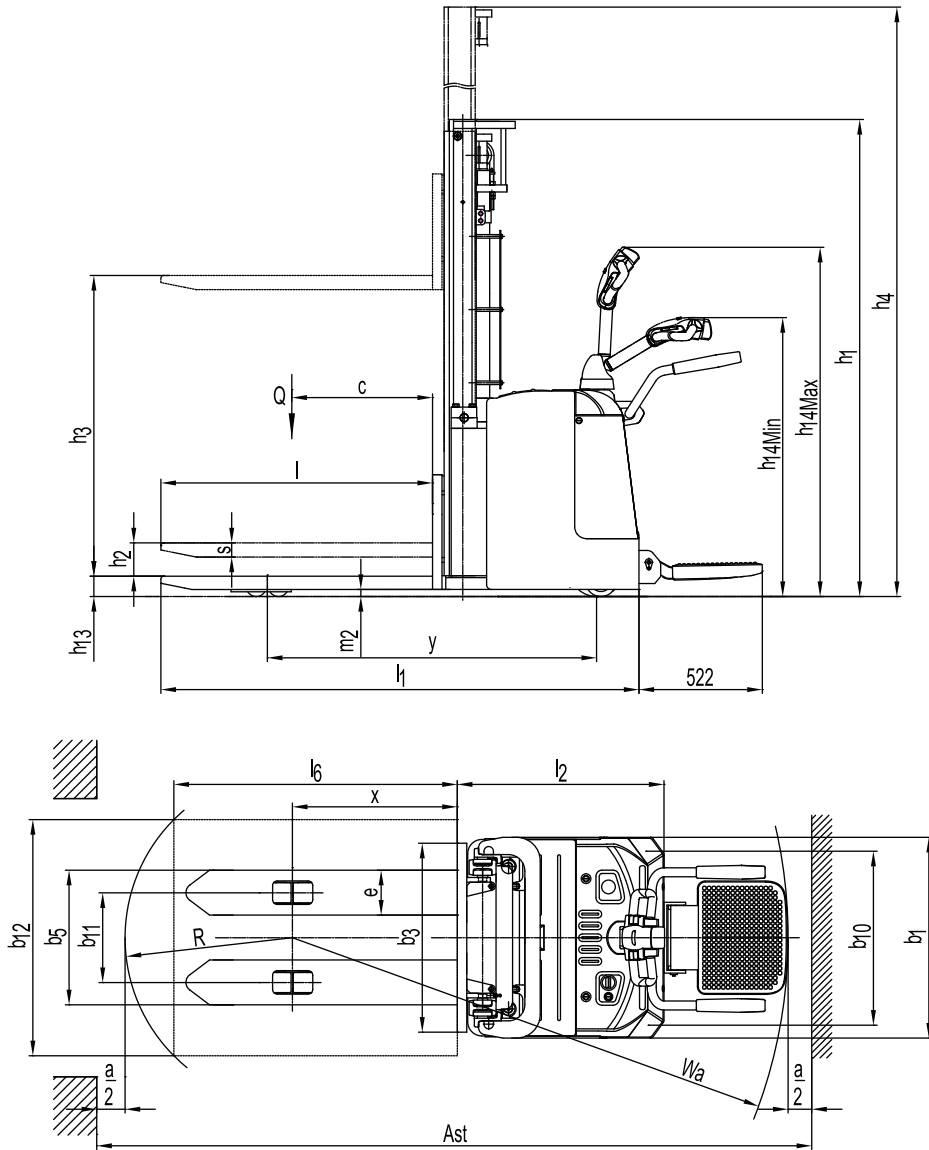
- AC traction motor, maintenance free.
- Hour meter and battery indicator remind the operator of battery charging.
- Easily remove the back cover by only losing four bolts; Access to all key components for inspection, maintenance and replacement.
- Easy access for battery maintenance.
- Vertical motor makes the inspection & service much more convenient.
- Control system allows easy trouble-shooting.
- Mast and chassis are assembled together, easy for maintenance.
- Low voltage cut off setting protects batteries.

Electric Stacker 2.0t

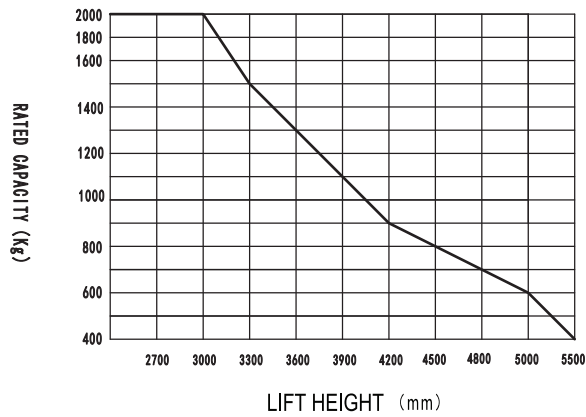
ES20-20RAS

Distinguishing mark				
1.1	Manufacturer			EP
1.2	Model designation			ES20-20RAS
1.3	Drive unit			Battery
1.4	Operator type			Standing
1.5	rated capacity	Q	kg	2000
1.6	Load center distance	c	mm	600
1.8	Load distance, centre of drive axle to fork	x	mm	693
1.9	Wheelbase	y	mm	1394
Weight				
2.1	Service weight (include battery)		kg	1350
2.2	Axle loading, laden driving side/loading side		kg	1100/2250
2.3	Axle loading, unladen driving side/loading side		kg	950/400
Types,Chassis				
3.1	Tyre type Driving wheels/Loading wheels			PU/ PU
3.2	Tyre size, driving wheels (diameterxwidth)		mm	Φ230x75
3.3	Tyre size, loading wheels (diameterxwidth)		mm	Φ85x70
3.4	Tyre size, caster wheels (diameterxwidth)		mm	Φ130x55
3.5	Wheels, number driving, caster/loading (x=drive wheels)		mm	1x +2/4
3.6	Track width, front,driving side	b ₁₀	mm	634
3.7	Track width,rear,loading side	b ₁₁	mm	495
Dimensions				
4.2	Height, mast lowered	h ₁	mm	2020
4.3	Free lift	h ₂	mm	100
4.4	Lift height	h ₃	mm	2912
4.5	Height, mast extended	h ₄	mm	3465
4.9	Height drawbar in driving position min./max.	h ₁₄	mm	1150/1480
4.15	Lowered height	h ₁₃	mm	88
4.19	Overall length	l ₁	mm	2003
4.20	Length to face of forks	l ₂	mm	860
4.21	Overall width	b ₁	mm	850
4.22	Fork dimensions	s/ e/ l	mm	60x190x1150
4.24	Fork carriage width	b ₃	mm	800
4.25	Outside width of the forks	b ₅	mm	685
4.32	Ground clearance, center of wheelbase	m ₂	mm	28
4.34.1	Aisle width for pallets 1000 x 1200 crossways	Ast	mm	2610/2971
4.34.2	Aisle width for pallets 800 x 1200 lengthways	Ast	mm	2580/2941
4.35	Turning radius	Wa	mm	1738/2099
Performance data				
5.1	Travel speed, laden/ unladen		km/ h	4.5/5.0
5.2	Lifting speed, laden/ unladen		m/ s	0.1/ 0.16
5.3	Lowering speed, laden/ unladen		m/ s	0.33/ 0.23
5.8	Max. gradeability, laden/unladen		%	6/ 12
5.10	Service brake type			Electromagnetic
Electric-engine				
6.1	Drive motor rating S2 60 min		kW	1.6
6.2	Lift motor rating at S3 15%		kW	3.0
6.3	The maximum allowed size battery		mm	834x216x630
6.4	Battery voltage/nominal capacity K5		V/ Ah	24/280
6.5	Battery weight		kg	240
Addition data				
8.1	Type of drive unit			AC
10.5	Steering type			Electronic Steering
10.7	Sound pressure level at the driver's ear		dB (A)	74

If there are improvements of technical parameters or configurations, no further notice will be given.
The diagram shown may contain non-standard configurations.



RATED CAPACITIES GRAPH



Mast Option

Lift h3+h13 (mm)	mast types	Lowered mast height h1 (mm)	Free lift h2 (mm)	Extended mast height h4 (mm)
2700	Duplex ZT	1870	100	3165
3000		2020	100	3465
3300		2170	100	3765
3600		2320	100	4065
3900		2470	100	4365
4170		2600	100	4625
4000	Triplex DZ	1822	1390	4460
4500		2022	1590	4960
4800		2122	1690	5260
5000		2187	1740	5460
5300		2287	1840	5760
5500		2352	1910	5910
2700	Duplex ZZ	1819	1320	3135
3000		1969	1470	3435
3300		2119	1620	3735

Option

Options		ES20-20RAS
3	Fork length	●1150○1220
4	Fork width	●570○685
10	Driving wheel	●Rubber wheel○PU wheel with pattern
11	Balance wheel	●
15	cold storage	○
16	Mast screen	○
17	Battery indicator with hour meter	●
18	Battery indicator without hour meter	○
19	Battery capacity	○280AH/360AH
20	Lateral change battery	●
22	Water auto-filling system	○
25	Vertical handler working	—
26	Proportional lifting	○
27	Height limitation	●
30	Side shift	—
31	half speed function in turning	●
32	Guard arm	●

Note: ●standard ○option —NA



ES12-12CS ES15-15CS Electric Stacker 1.2/1.5t

Counterbalance Stackers, Better for Non-standardized Pallets.
Electric Steering System Makes the Operations Much Easier.

EP EQUIPMENT CO.,LTD
www.ep-ep.com



FEATURE



Performance

- The innovative AC system offers strong power, accurate control, excellent performance.
- High strength vertical gearbox, longer working life.
- Low-noise but durable hydraulic unit, good quality cylinder as well as hose ensure the high reliability of hydraulic system.
- AMP connector and durable electric wires greatly reduce malfunctions of components.
- High strength chassis enhances the reliability and durability of the truck.
- Standard featured tilt mast cylinder design and controller monitoring the tilt speed smoothly and ensures safe performance.
- Heavy duty load wheel ensures stability.
- Compact design with small turning radius requirements.



Safety

- Safe hydraulic system design prevents mast from falling down abruptly when hydraulic pipeline cuts off.
- Emergency reverse belly button protects the operator from getting hurt.
- Emergency disconnecter will cut off power source to avoid accident when truck goes out of control.
- Multiple lifting limit protection ensures safety.
- Automatic switch to lower speed when the fork reaches its setting height.
- Anti-rolling back brake keeps the truck from skidding down when truck is out of control or travelling on ramp.
- Dual-monitoring power steering.

Operation

- With the new design of ergonomical tiller head, all buttons can be reached conveniently & comfortably.
- Foldable platform reduces vibration which makes operator feel more comfortable.
- When platform folded, truck can work at low speed in smaller space.
- Adjustable forks, suitable for complicated pallets or cargos.
- Tilting as standard configuration, make operation easier.
- Side-open battery design for easy battery replacement and various applications.
- Electric power steering, smooth & comfortable (EPS).

Maintenance

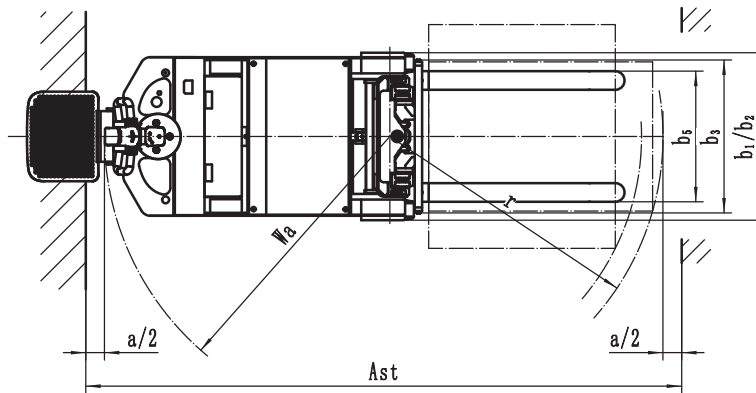
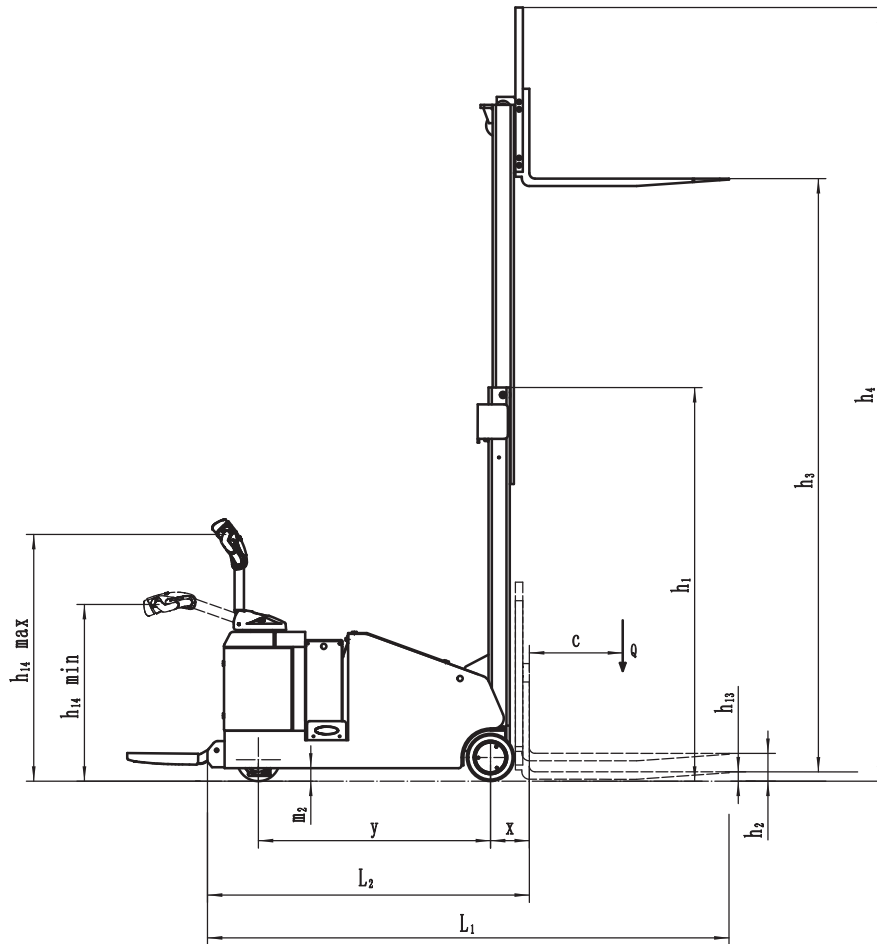
- AC traction motor, maintenance free.
- Hour meter and battery indicator will remind the operator to recharge the battery.
- Easily remove the back cover by only losing four bolts; Access to all key components for inspection, maintenance and replacement.
- Press-on load wheel reduces the maintenance cost.
- Vertical motor makes the inspection & service much more convenient.
- Control system allows easy trouble-shooting.
- Mast and chassis are assembled together, easy for maintenance.
- Low voltage cut off setting protects batteries.

Electric Stacker 1.2/1.5t

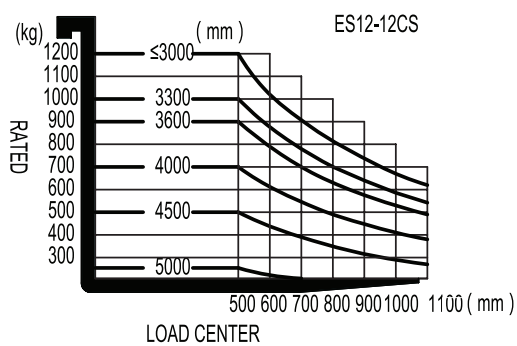
ES12-12CS/ES15-15CS

Distinguishing mark					
1.1	Manufacturer			EP	EP
1.2	Model designation			ES12-12CS	ES15-15CS
1.3	Drive unit			Electrics	Electrics
1.4	Operator type			pedestrian	standing
1.5	rated capacity	Q	kg	1200	1500
1.6	Load center distance	c	mm	500	600
1.8	Load distance, centre of drive axle to fork	x	mm	208	215
1.9	Wheelbase	y	mm	1244	1355
Weight					
2.1	Service weight (include battery)		kg	1860	2420
2.2	Axle loading, laden driving side/loading side		kg	375/2685	510/3410
2.3	Axle loading, unladen driving side/loading side		kg	1060/800	1430/990
Types, Chassis					
3.1	Tyre type Driving wheels/Loading wheels			polyurethane/ polyurethane	PU/PU
3.2	Tyre size, driving wheels (diameterxwidth)		mm	Φ230x 75	Φ260x105
3.3	Tyre size, loading wheels (diameterxwidth)		mm	Φ254x102	Φ254x102
3.4	Tyre size, caster wheels (diameterxwidth)		mm	—	—
3.5	Wheels, number driving, caster/loading (x=drive wheels)		mm	1x, 0/2	1x, 0/2
3.6	Track width, front, driving side	b ₁₀	mm	787	787
3.7	Track width, rear, loading side	b ₁₁	mm	—	—
Dimensions					
4.1	Tilt of mast/fork carriage forward/backward	α/β	°	1.5/6	1.5/6
4.2	Height, mast lowered	h ₁	mm	2110	2118
4.3	Free lift	h ₂	mm	150	150
4.4	Lift height	h ₃	mm	3210	3140
4.5	Height, mast extended	h ₄	mm	4185	4115
4.9	Height drawbar in driving position min./max.	h ₁₄	mm	1013/1402	1013/1402
4.10	Height of wheel arms	h ₈	mm	282	282
4.15	Lowered height	h ₁₃	mm	60	60
4.19	Overall length	l ₁	mm	2835	2985
4.20	Length to face of forks	l ₂	mm	1738	1915
4.21	Overall width	b ₁ / b ₂	mm	850/900	850/900
4.22	Fork dimensions	s/ e/ l	mm	40/100/1070	40/100/1070
4.24	Fork carriage width	b ₃	mm	800	800
4.25	Outside width of the forks	b ₅	mm	200-760	200-760
4.31	Ground clearance, laden, below mast	m ₁	mm	78	78
4.32	Ground clearance, center of wheelbase	m ₂	mm	70	70
4.34.1	Aisle width for pallets 1000 × 1200 crossways	Ast	mm	3085	3270
4.34.2	Aisle width for pallets 800 × 1200 lengthways	Ast	mm	3200	3385
4.35	Turning radius	Wa	mm	1535	1715
Performance data					
5.1	Travel speed, laden/ unladen		km/ h	5.5/6.0	4.65
5.2	Lifting speed, laden/ unladen		m/ s	0.127/0.23	0.12/0.17
5.3	Lowering speed, laden/ unladen		m/ s	0.26/0.2	0.13/0.1
5.8	Max. gradeability, laden/unladen		%	5.0/8.0	5.0/8.0
5.10	Service brake type			Electromagnetic	Electromagnetic
Electric-engine					
6.1	Drive motor rating S2 60 min		kW	1.5	4
6.2	Lift motor rating at S3 15%		kW	2.2	3
6.3	The maximum allowed size battery		mm	810/230/open	810/330/open
6.4	Battery voltage/nominal capacity K5		V/ Ah	24/210	24/280
6.5	Battery weight		kg	190	320
Addition data					
8.1	Type of drive unit			AC	AC
10.5	Steering type			Electronic	Electronic
10.7	Sound pressure level at the driver's ear		dB(A)	74	74

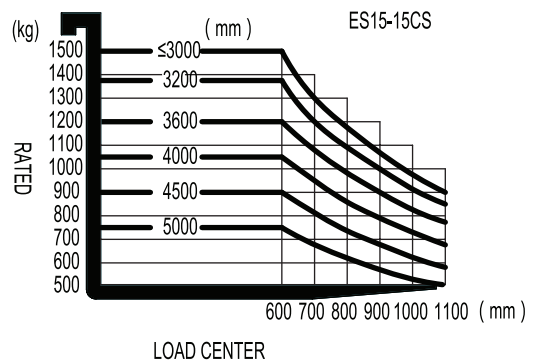
If there are improvements of technical parameters or configurations, no further notice will be given.
The diagram shown may contain non-standard configurations.



RATED CAPACITIES GRAPH



RATED CAPACITIES GRAPH



Mast Option

ES12-12CS

Lift h3+h13 (mm)	mast types	Lowered mast height h1 (mm)	Free lift h2 (mm)	Extended mast height h4 (mm)
2470	Duplex ZT	1710	150	3385
2670		1810	150	3585
2970		1960	150	3885
3270		2110	150	4185
3570		2260	150	4485
3870		2410	150	4785
4000	Triplex DZ	1822	904	4915
4500		2022	1104	5415

ES15-15CS

Lift h3+h13 (mm)	mast types	Lowered mast height h1 (mm)	Free lift h2 (mm)	Extended mast height h4 (mm)
2640	Duplex ZT	1838	150	3555
3000		2018	150	3915
3200		2118	150	4115
3590		2303	150	4505
4000	Triplex DZ	1822	907	4915
4500		2022	1107	5415
5000		2187	1272	5915

Option

Options		ES12-12CS	ES15-15CS
3	Fork length	●1070	●1070
4	Fork width	●200-760(Adjustable)	●200-760(Adjustable)
10	Driving wheel	●PU	●PU
11	Balance wheel	—	—
15	cold storage	○	○
16	Mast screen	—	—
17	Battery indicator with hour meter	●	●
18	Battery indicator without hour meter	○	○
19	Battery capacity	○280AH/224AH (Maintenance-free)	○360AH
20	Lateral change battery	○	○
22	Water auto-filling system	○	○
25	Vertical handler working	—	—
26	Proportional lifting	○	○
27	Height limitation	●	●
30	Side shift	○	○
31	half speed function in turning	●	●
32	Guard arm	—	—

Note: ● standard ○ option — NA